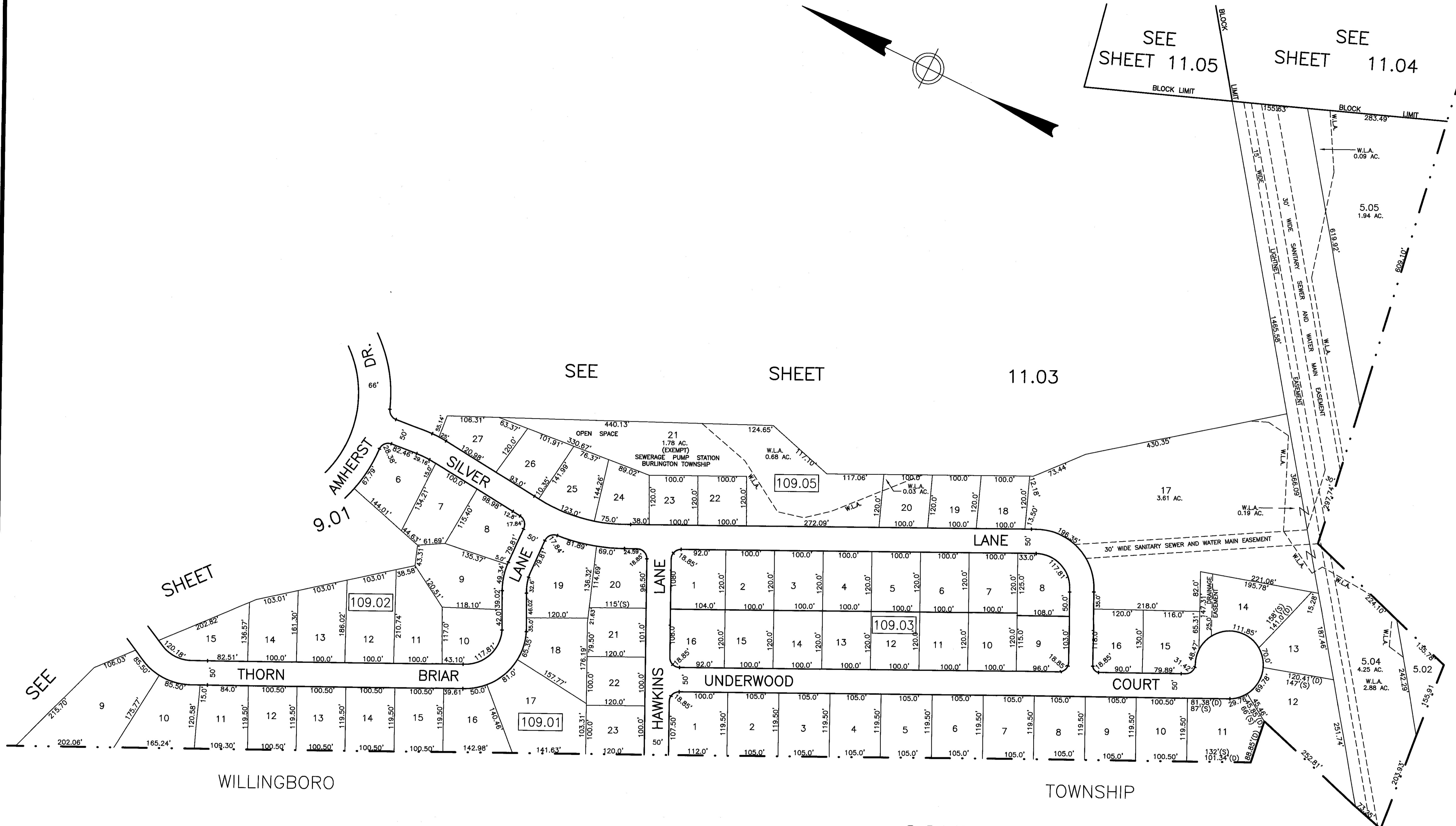


SEE SHEET 11.05
SEE SHEET 11.04

BURLINGTON COUNTY
WILLINGBORO TOWNSHIP



SEE SHEET 9.01

SEE SHEET 11.03

WILLINGBORO TOWNSHIP

BURLINGTON COUNTY

TAX MAP

BURLINGTON TOWNSHIP
BURLINGTON COUNTY, NEW JERSEY
SCALE: 1" = 100' SEPTEMBER 7, 1990
T. RONALD GSELL, P.E. & P.L.S.
200 HIGH STREET, MOUNT HOLLY, N.J.

THIS SHEET HAS BEEN GIVEN A FORMAL CERTIFICATION BY THE DIVISION OF TAXATION ON JULY 11, 2005, SIGNED BY JAMES COLL AND SANTO DIDONATO ASSIGNED SERIAL NUMBER 863.

THIS SHEET IS AN AUTOCAD GENERATED DRAWING. THIS WAS DONE UNDER THE SUPERVISION OF T. RONALD GSELL, P.E. & P.L.S., LICENSED LAND SURVEYOR N.J. LICENSE #12812, DATED SEPTEMBER 7, 1990. THE APPROVED ORIGINAL IS ON FILE IN THE BURLINGTON TOWNSHIP'S ASSESSOR'S OFFICE.