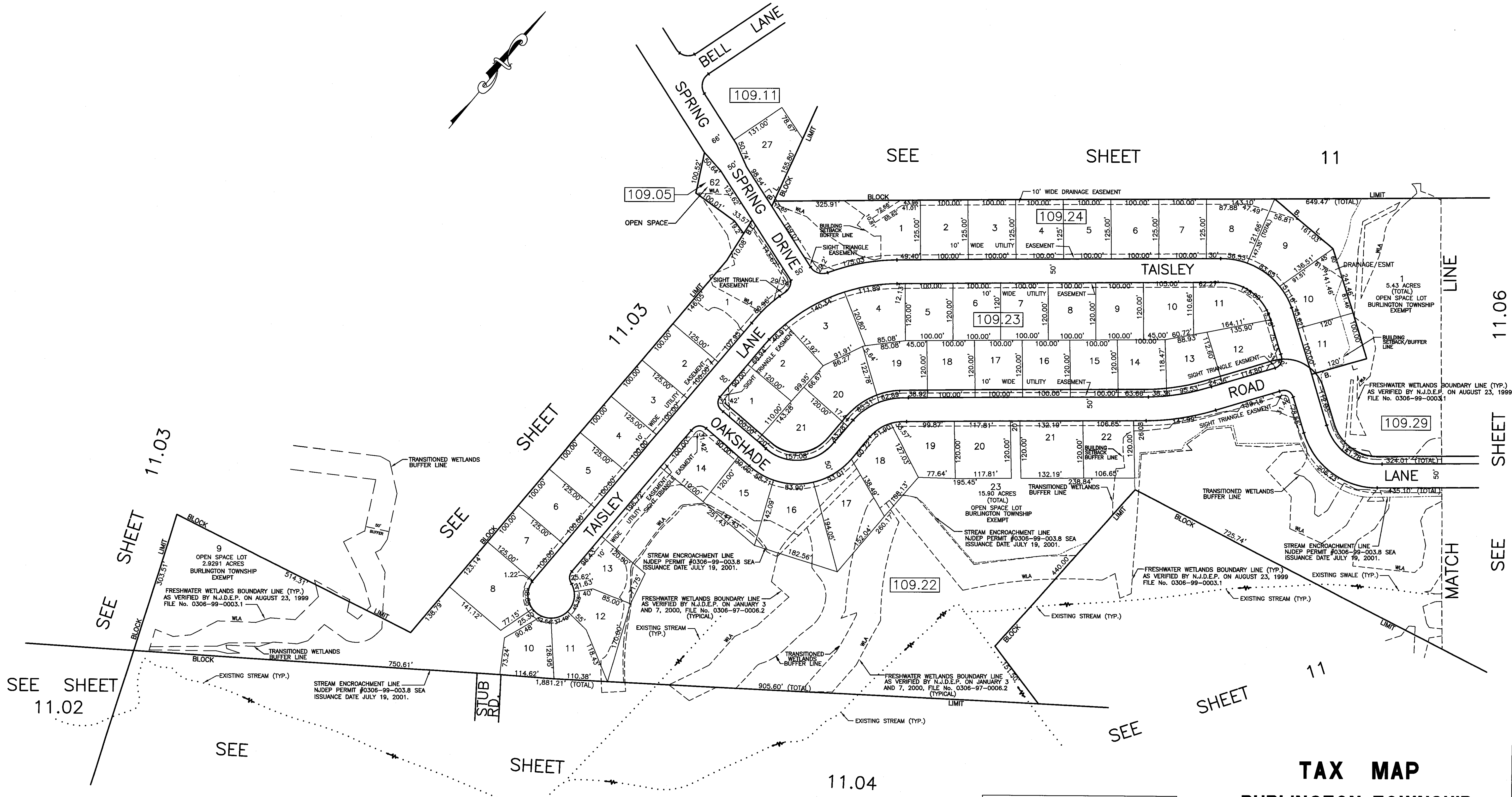
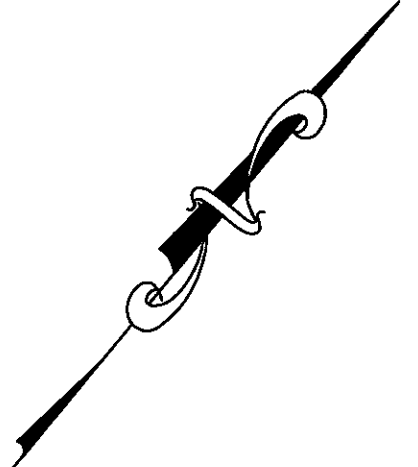


SEE SHEET 11.03

SEE SHEET 11



SEE SHEET 11.02

SEE SHEET 11.03

SEE SHEET 11.03

SHEET

11.04

SEE SHEET 11

SEE SHEET 11.06

THIS SHEET HAS BEEN GIVEN A FORMAL CERTIFICATION BY THE DIVISION OF TAXATION ON JULY 11, 2005, SIGNED BY JAMES COLL AND SANTO DIDONATO ASSIGNED SERIAL NUMBER 863.

THIS SHEET IS AN AUTOCAD GENERATED DRAWING. THIS WAS DONE UNDER THE SUPERVISION OF T. RONALD GSELL, P.E. & P.L.S., LICENSED LAND SURVEYOR N.J. LICENSE #12812, DATED MARCH 21, 2002. THE APPROVED ORIGINAL IS ON FILE IN THE BURLINGTON TOWNSHIP'S ASSESSOR'S OFFICE.

TAX MAP
BURLINGTON TOWNSHIP
BURLINGTON COUNTY, NEW JERSEY
SCALE: 1" = 100' MARCH 21, 2002
T. RONALD GSELL, P.E. & P.L.S.
200 HIGH STREET, MOUNT HOLLY, N.J.