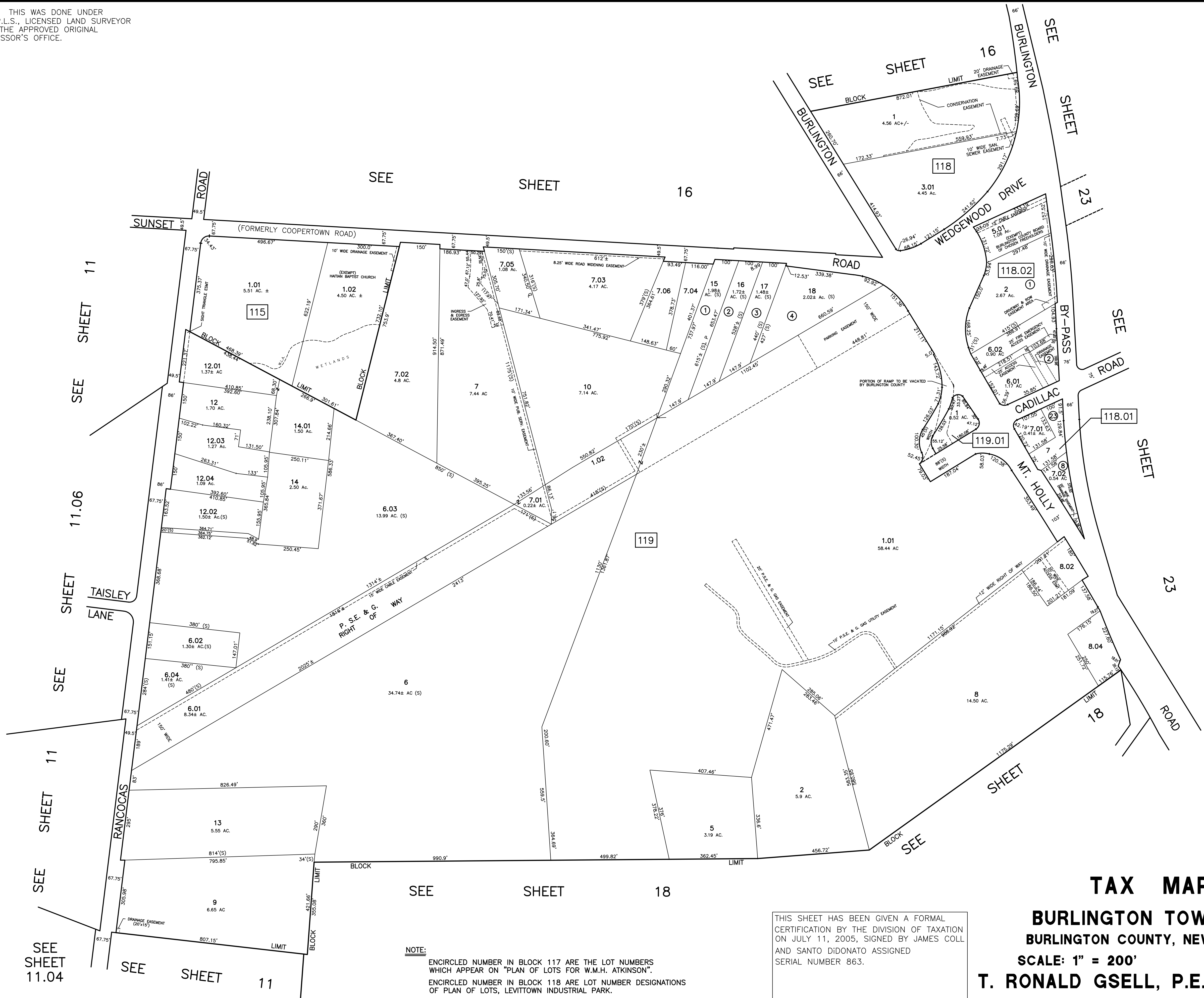
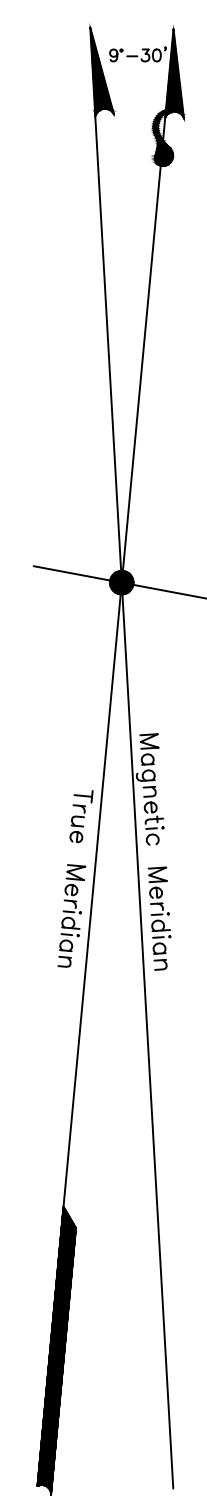


THIS SHEET IS AN AUTOCAD GENERATED DRAWING. THIS WAS DONE UNDER THE SUPERVISION OF T. RONALD GSELL, P.E. & P.L.S., LICENSED LAND SURVEYOR N.J. LICENSE #12812, DATED . . . THE APPROVED ORIGINAL IS ON FILE IN THE BURLINGTON TOWNSHIP'S ASSESSOR'S OFFICE.



NOTE:
ENCIRCLED NUMBER IN BLOCK 117 ARE THE LOT NUMBERS WHICH APPEAR ON "PLAN OF LOTS FOR W.M.H. ATKINSON".
ENCIRCLED NUMBER IN BLOCK 118 ARE LOT NUMBER DESIGNATIONS OF PLAN OF LOTS, LEVITTOWN INDUSTRIAL PARK.
ENCIRCLED NUMBER IN BLOCK 119 ARE THE LOT NUMBERS WHICH APPEAR ON "PLAN OF THE HEIRS OF JANE ATKINSON".

THIS SHEET HAS BEEN GIVEN A FORMAL CERTIFICATION BY THE DIVISION OF TAXATION ON JULY 11, 2005, SIGNED BY JAMES COLL AND SANTO DIDONATO ASSIGNED SERIAL NUMBER 863.

TAX MAP
BURLINGTON TOWNSHIP
BURLINGTON COUNTY, NEW JERSEY
SCALE: 1" = 200'
T. RONALD GSELL, P.E. & P.L.S.
200 HIGH STREET, MOUNT HOLLY, N.J.