

SEE

SEE

SHEET

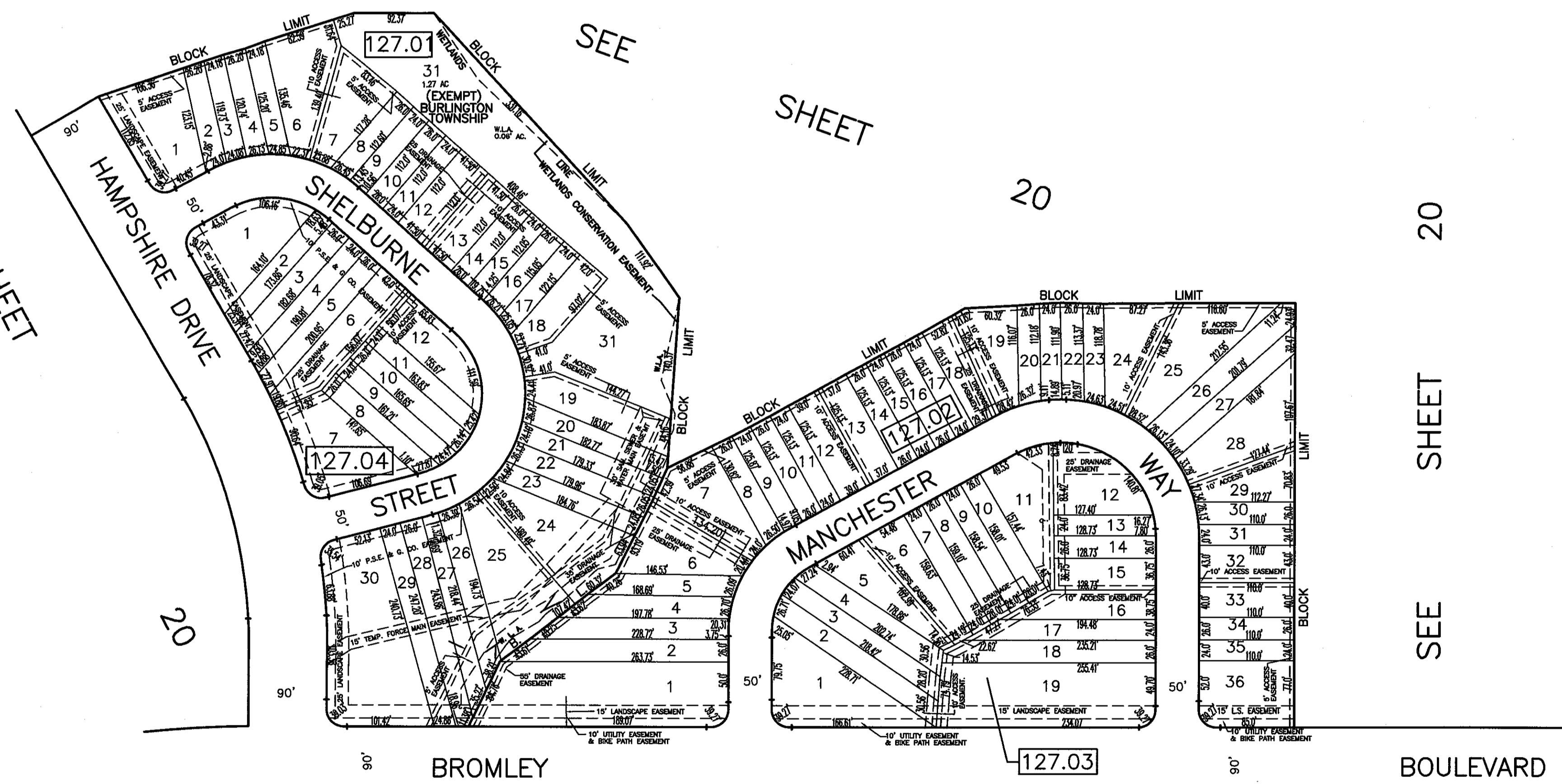
20

SHEET

20

SHEET

SEE



SEE

SHEET

20

THIS SHEET IS AN AUTOCAD GENERATED DRAWING. THIS WAS DONE UNDER THE SUPERVISION OF T. RONALD GSELL, P.E. & P.L.S., LICENSED LAND SURVEYOR N.J. LICENSE #12812, DATED SEPTEMBER 25, 1991. THE APPROVED ORIGINAL IS ON FILE IN THE BURLINGTON TOWNSHIP'S ASSESSOR'S OFFICE.

THIS SHEET HAS BEEN GIVEN A FORMAL CERTIFICATION BY THE DIVISION OF TAXATION ON JULY 11, 2005, SIGNED BY JAMES COLL AND SANTO DIDONATO ASSIGNED SERIAL NUMBER 863.

TAX MAP
BURLINGTON TOWNSHIP
BURLINGTON COUNTY, NEW JERSEY
SCALE: 1" = 100' SEPTEMBER 25, 1991
T. RONALD GSELL, P.E. & P.L.S.
200 HIGH STREET, MOUNT HOLLY, N.J.