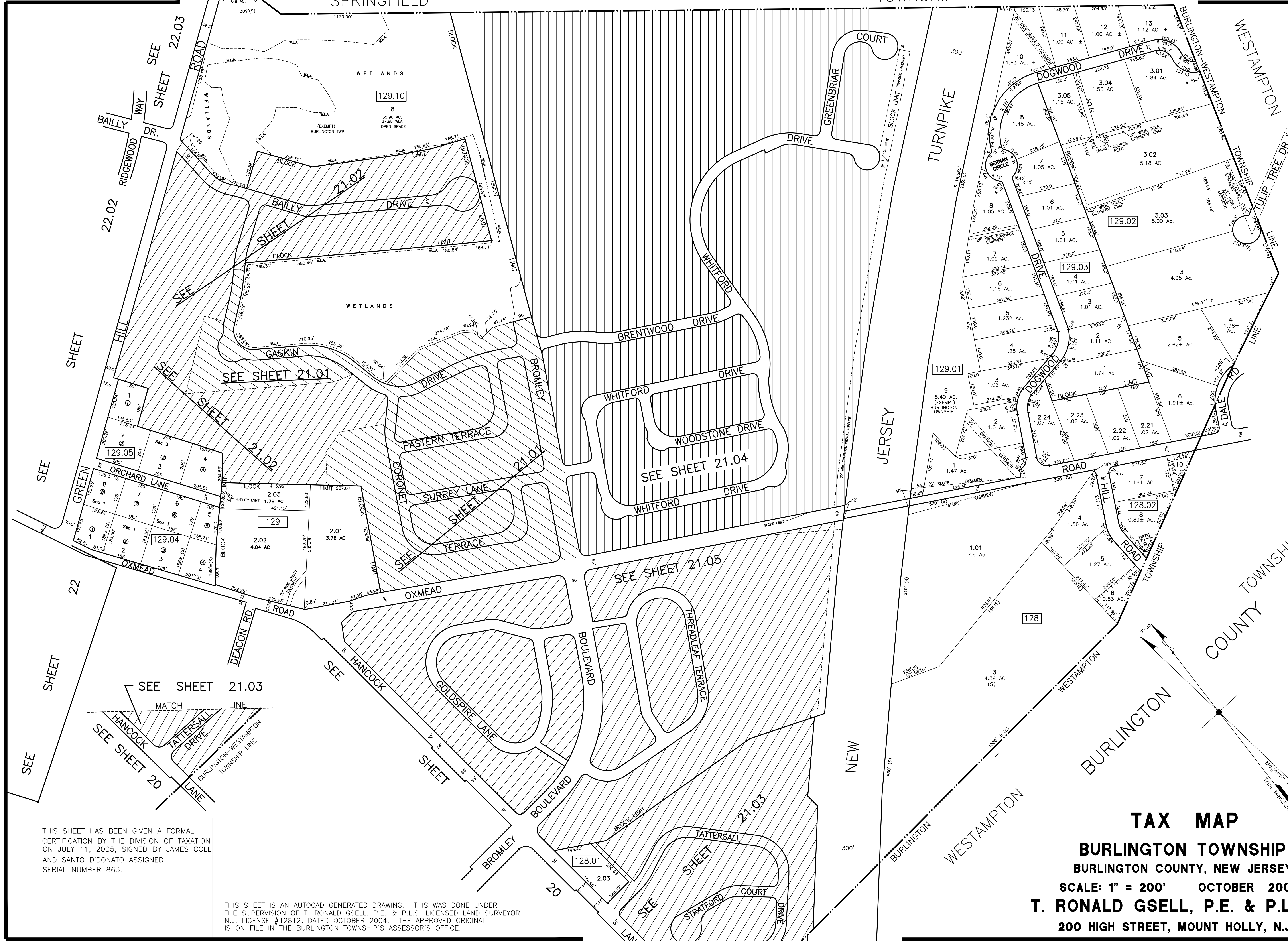


SPRINGFIELD BURLINGTON COUNTY TOWNSHIP



THIS SHEET HAS BEEN GIVEN A FORMAL CERTIFICATION BY THE DIVISION OF TAXATION ON JULY 11, 2005, SIGNED BY JAMES COLL AND SANTO DIDONATO ASSIGNED SERIAL NUMBER 863.

THIS SHEET IS AN AUTOCAD GENERATED DRAWING. THIS WAS DONE UNDER THE SUPERVISION OF T. RONALD GSELL, P.E. & P.L.S. LICENSED LAND SURVEYOR N.J. LICENSE #12812, DATED OCTOBER 2004. THE APPROVED ORIGINAL IS ON FILE IN THE BURLINGTON TOWNSHIP'S ASSESSOR'S OFFICE.

**TAX MAP**  
**BURLINGTON TOWNSHIP**  
 BURLINGTON COUNTY, NEW JERSEY  
 SCALE: 1" = 200' OCTOBER 2004  
 T. RONALD GSELL, P.E. & P.L.S.  
 200 HIGH STREET, MOUNT HOLLY, N.J.