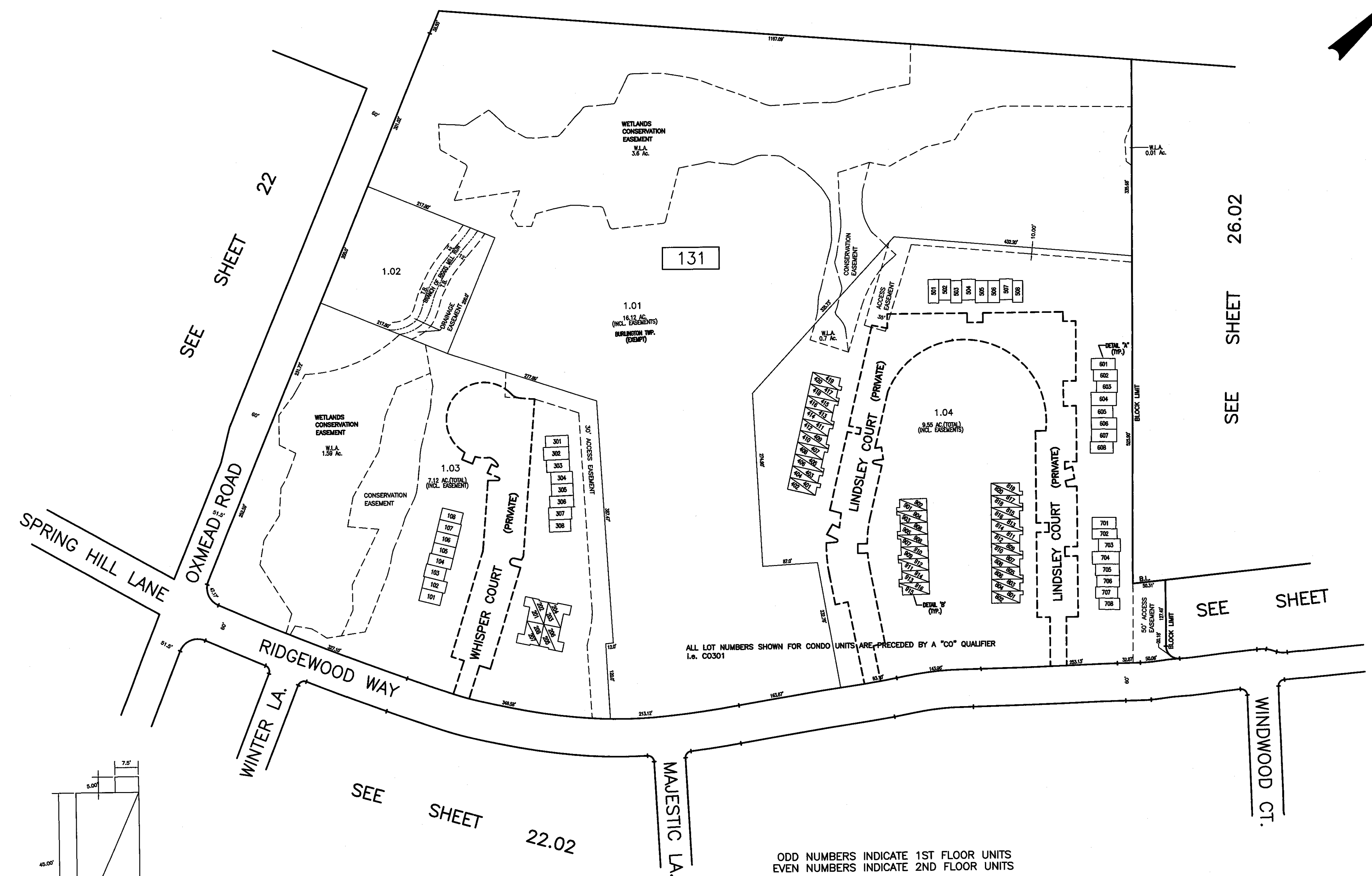
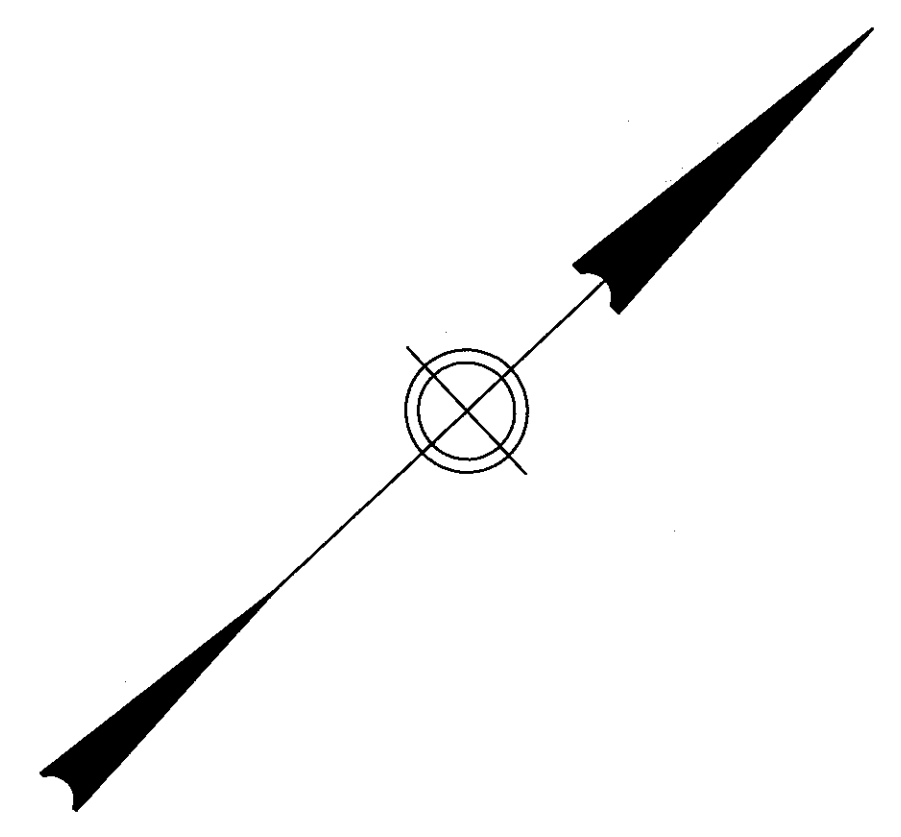


SEE SHEET 22

INTERSTATE ROUTE 295



SEE SHEET 22

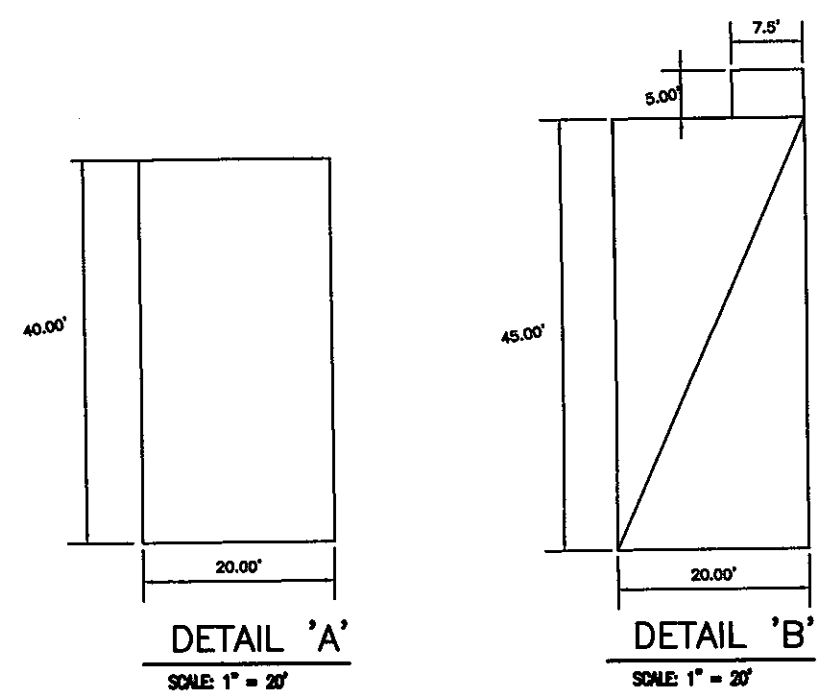
SEE SHEET 26.02

SEE SHEET 22.03

SEE SHEET 22.02

ALL LOT NUMBERS SHOWN FOR CONDO UNITS ARE PRECEDED BY A "CO" QUALIFIER I.e. CO301

ODD NUMBERS INDICATE 1ST FLOOR UNITS  
EVEN NUMBERS INDICATE 2ND FLOOR UNITS



DETAIL 'A'  
SCALE: 1" = 20'

DETAIL 'B'  
SCALE: 1" = 20'

THIS SHEET IS AN AUTOCAD COMPUTER GENERATED DRAWING.  
THIS WAS DONE UNDER THE SUPERVISION OF T. RONALD GSELL, P.E. & P.L.S.  
LICENSED LAND SURVEYOR N.J., LICENSE NO. 12812 DATED NOVEMBER 22, 1995.  
THE APPROVED ORIGINAL IS ON FILE IN THE ENGINEER'S OFFICE.

THIS SHEET HAS BEEN GIVEN A FORMAL  
CERTIFICATION BY THE DIVISION OF TAXATION  
ON JULY 11, 2005, SIGNED BY JAMES COLL  
AND SANTO DIDONATO ASSIGNED  
SERIAL NUMBER 863.

**TAX MAP**  
**BURLINGTON TOWNSHIP**  
**BURLINGTON COUNTY, NEW JERSEY**  
SCALE: 1" = 100'    NOVEMBER 22, 1989  
**T. RONALD GSELL, P.E. & P.L.S.**  
200 HIGH STREET, MOUNT HOLLY, N.J.