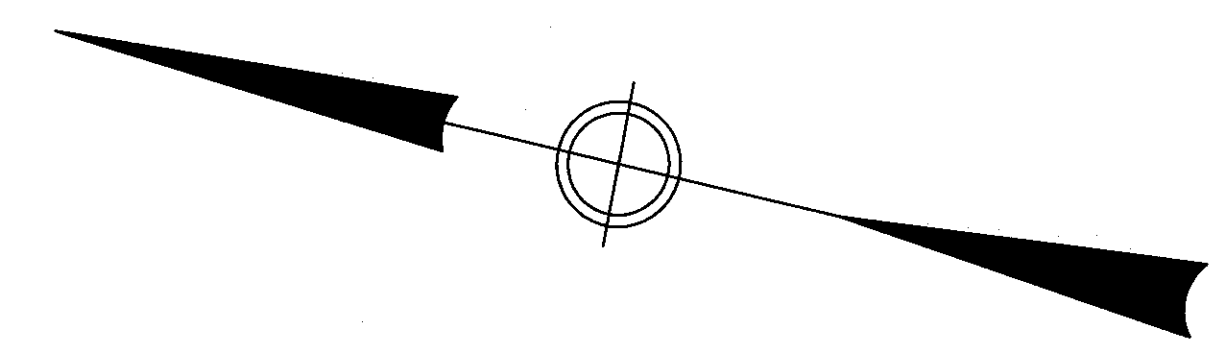
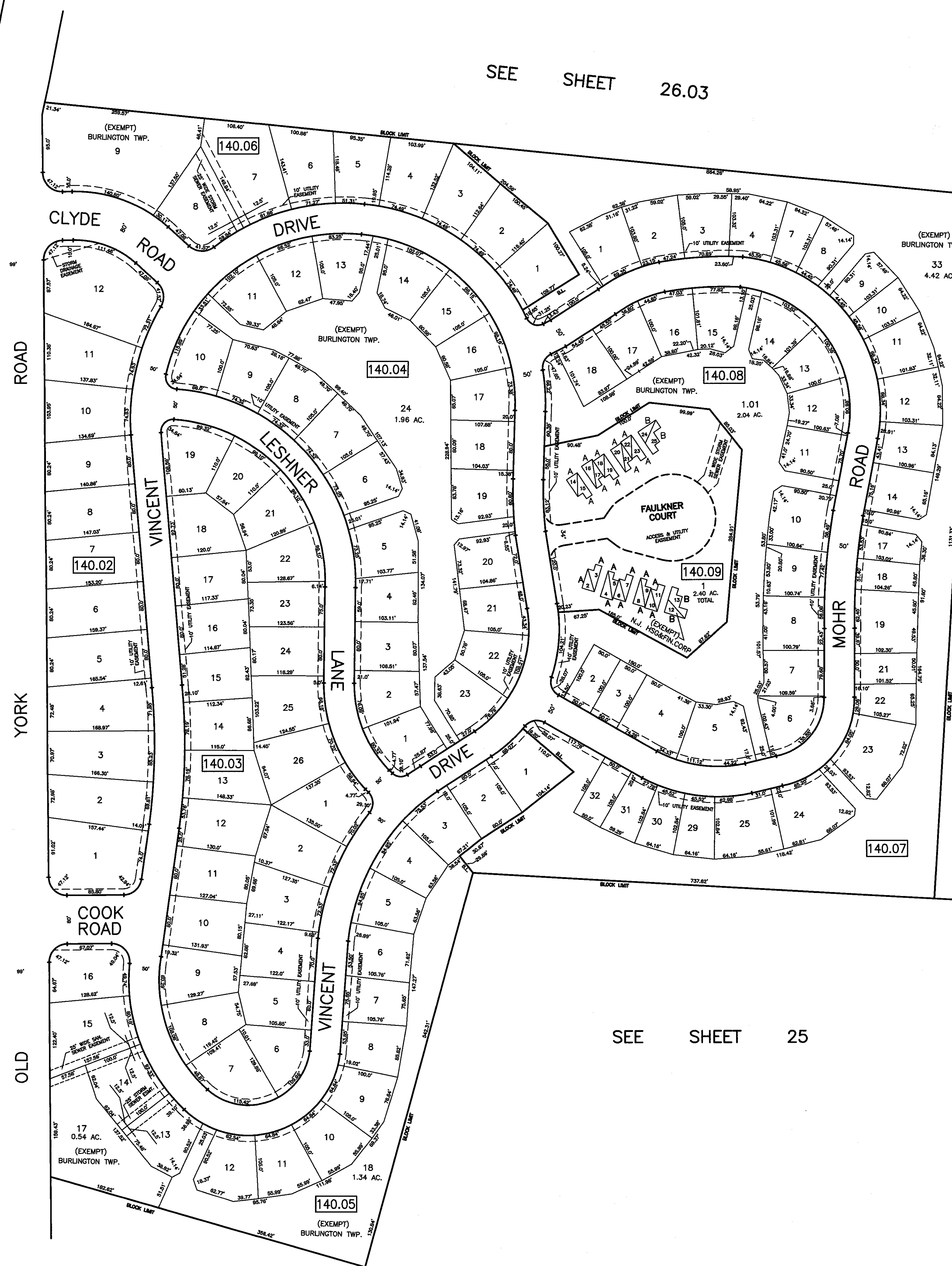


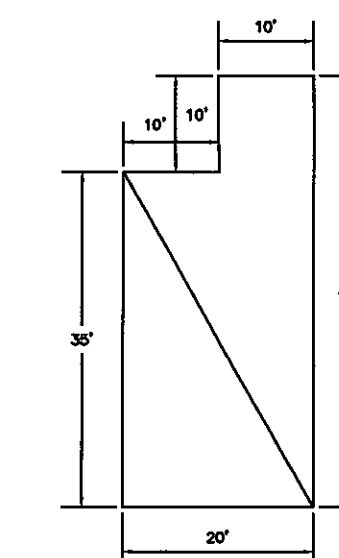
SEE SHEET 26.03

SEE SHEET 28

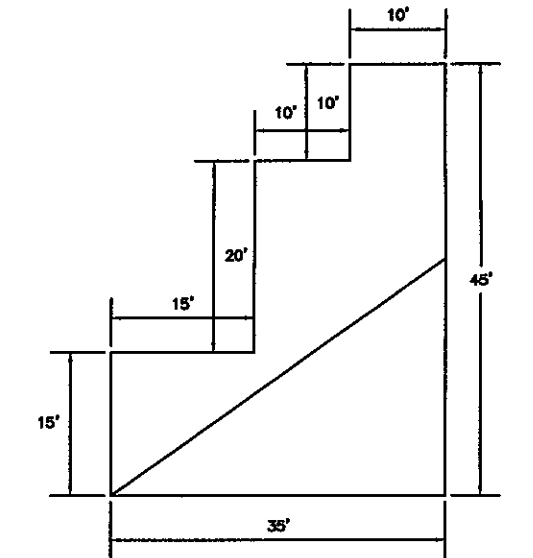
SEE SHEET 26



ALL LOT NUMBERS SHOWN FOR CONDO UNITS ARE PRECEDED BY A "COO" AND "COOO" QUALIFIER i.e. COO10/COOO1



DETAIL 'A'
SCALE: 1" = 20'



DETAIL 'B'
SCALE: 1" = 20'

EVEN NUMBERS DENOTE FIRST FLOOR UNITS
ODD NUMBERS DENOTE SECOND FLOOR UNITS

SEE SHEET 25

SEE SHEET 25

THIS SHEET HAS BEEN GIVEN A FORMAL CERTIFICATION BY THE DIVISION OF TAXATION ON JULY 11, 2005, SIGNED BY JAMES COLL AND SANTO DIDONATO ASSIGNED SERIAL NUMBER 863.

THIS SHEET IS AN AUTOCAD COMPUTER GENERATED DRAWING. THIS WAS DONE UNDER THE SUPERVISION OF T. RONALD GSELL, P.E. & P.L.S. LICENSED LAND SURVEYOR N.J. LICENSE NO. 12812 DATED JUNE 13, 1994. THE APPROVED ORIGINAL IS ON FILE IN THE ENGINEER'S OFFICE.

TAX MAP
BURLINGTON TOWNSHIP
BURLINGTON COUNTY, NEW JERSEY
SCALE: 1" = 100' **JUNE 13, 1994**
T. RONALD GSELL, P.E. & P.L.S.
200 HIGH STREET, MOUNT HOLLY, N.J.