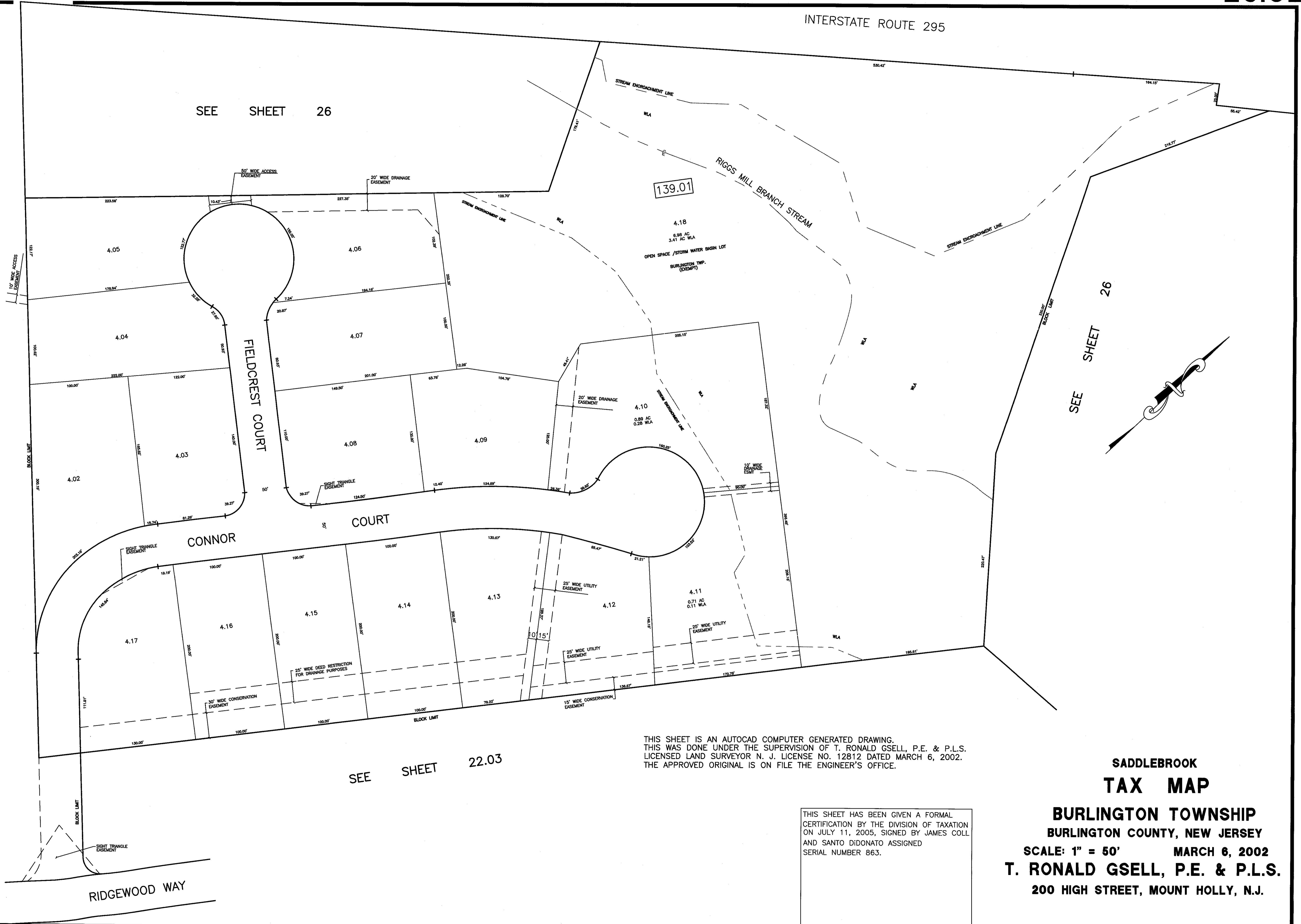
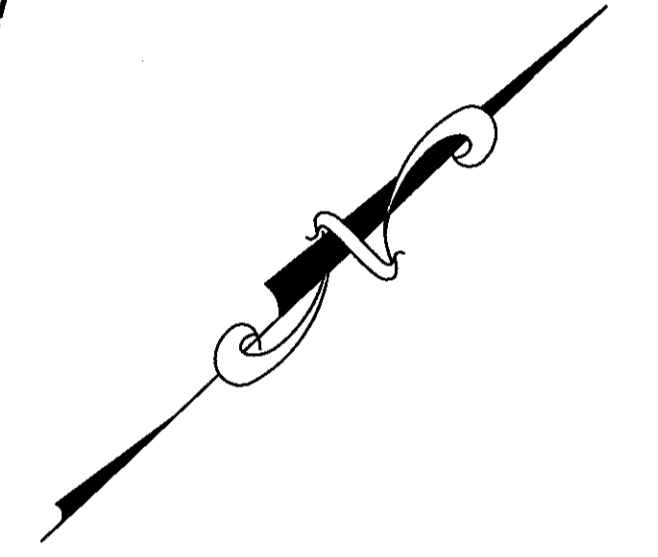


INTERSTATE ROUTE 295

SEE SHEET 26

SEE SHEET 22.01

SEE SHEET 26



THIS SHEET IS AN AUTOCAD COMPUTER GENERATED DRAWING. THIS WAS DONE UNDER THE SUPERVISION OF T. RONALD GSELL, P.E. & P.L.S. LICENSED LAND SURVEYOR N. J. LICENSE NO. 12812 DATED MARCH 6, 2002. THE APPROVED ORIGINAL IS ON FILE THE ENGINEER'S OFFICE.

SEE SHEET 22.03

THIS SHEET HAS BEEN GIVEN A FORMAL CERTIFICATION BY THE DIVISION OF TAXATION ON JULY 11, 2005, SIGNED BY JAMES COLL AND SANTO DIDONATO ASSIGNED SERIAL NUMBER 863.

**SADDLEBROOK  
TAX MAP**  
**BURLINGTON TOWNSHIP**  
**BURLINGTON COUNTY, NEW JERSEY**  
SCALE: 1" = 50'      MARCH 6, 2002  
**T. RONALD GSELL, P.E. & P.L.S.**  
200 HIGH STREET, MOUNT HOLLY, N.J.