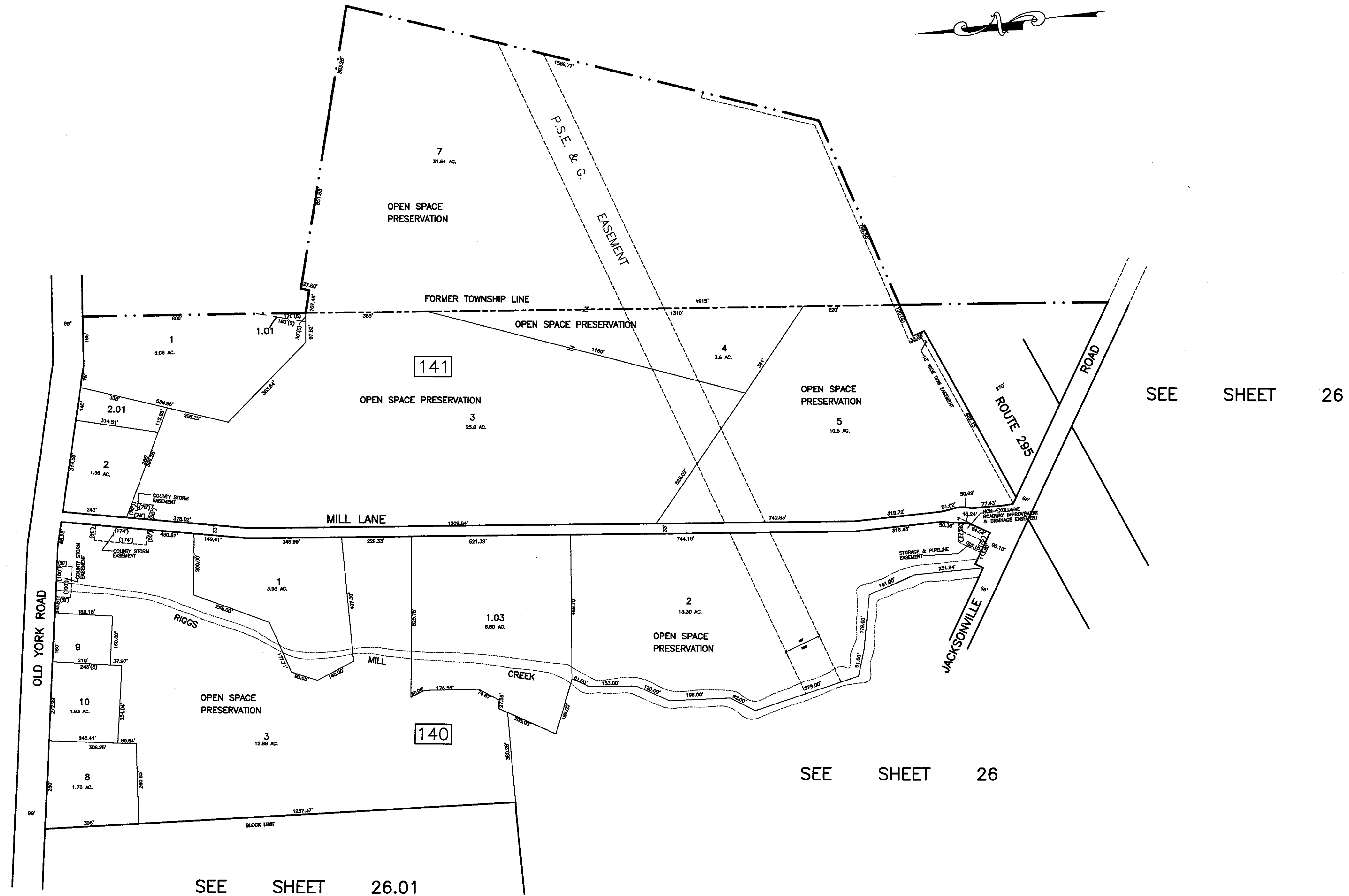


BURLINGTON COUNTY  
SPRINGFIELD TOWNSHIP



SEE SHEET 28

SEE SHEET 26

SEE SHEET 26

SEE SHEET 26.01

THIS SHEET IS AN AUTOCAD COMPUTER GENERATED DRAWING.  
 THIS WAS DONE UNDER THE SUPERVISION OF JAMES R. DATZ NJ LIC #24GS03671900  
 LICENSED LAND SURVEYOR N. J. 2 DATED MARCH 21, 2007.  
 THE APPROVED ORIGINAL IS ON FILE IN THE ENGINEER'S OFFICE.

THIS SHEET HAS BEEN GIVEN A FORMAL  
 CERTIFICATION BY THE DIVISION OF TAXATION  
 ON APRIL 30, 2007, SIGNED BY JAMES COLL  
 AND SANTO DIDONATO ASSIGNED  
 SERIAL NUMBER 863.

**TAX MAP**  
**BURLINGTON TOWNSHIP**  
 BURLINGTON COUNTY, NEW JERSEY  
 SCALE: 1" = 200' MARCH 21, 2007  
**JAMES R. DATZ P.L.S.**  
 200 HIGH STREET, MOUNT HOLLY, N.J.