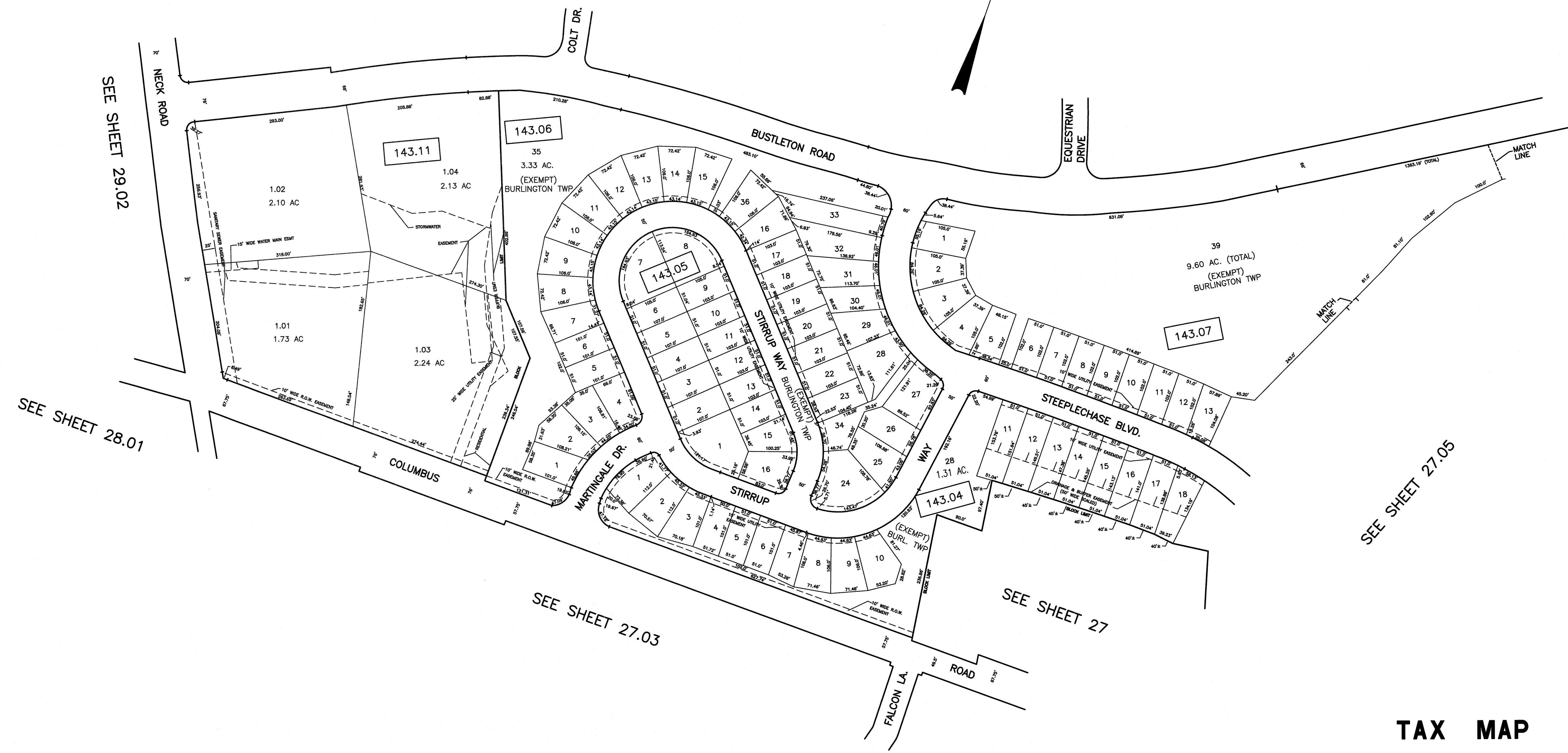
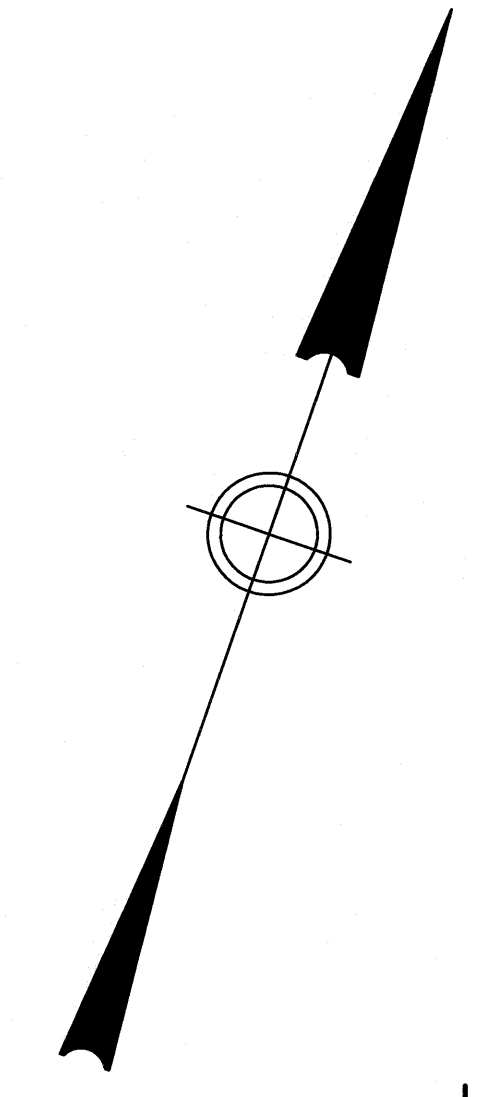


SEE SHEET 30.01



SEE SHEET 29.02

SEE SHEET 28.01

SEE SHEET 27.03

SEE SHEET 27

SEE SHEET 27.05

THIS SHEET HAS BEEN GIVEN A FORMAL CERTIFICATION BY THE DIVISION OF TAXATION ON JULY 11, 2005, SIGNED BY JAMES COLL AND SANTO DIDONATO ASSIGNED SERIAL NUMBER 863.

THIS SHEET IS AN AUTOCAD COMPUTER GENERATED DRAWING. THIS WAS DONE UNDER THE SUPERVISION OF T. RONALD GSELL, P.E. & P.L.S. LICENSED LAND SURVEYOR N.J. LICENSE NO. 12812 DATED FEBRUARY 23, 1999. THE APPROVED ORIGINAL IS ON FILE IN THE ENGINEER'S OFFICE.

TAX MAP
BURLINGTON TOWNSHIP
BURLINGTON COUNTY, NEW JERSEY
SCALE: 1" = 100' FEBRUARY 23, 1995
T. RONALD GSELL, P.E. & P.L.S.
200 HIGH STREET, MOUNT HOLLY, N.J.