



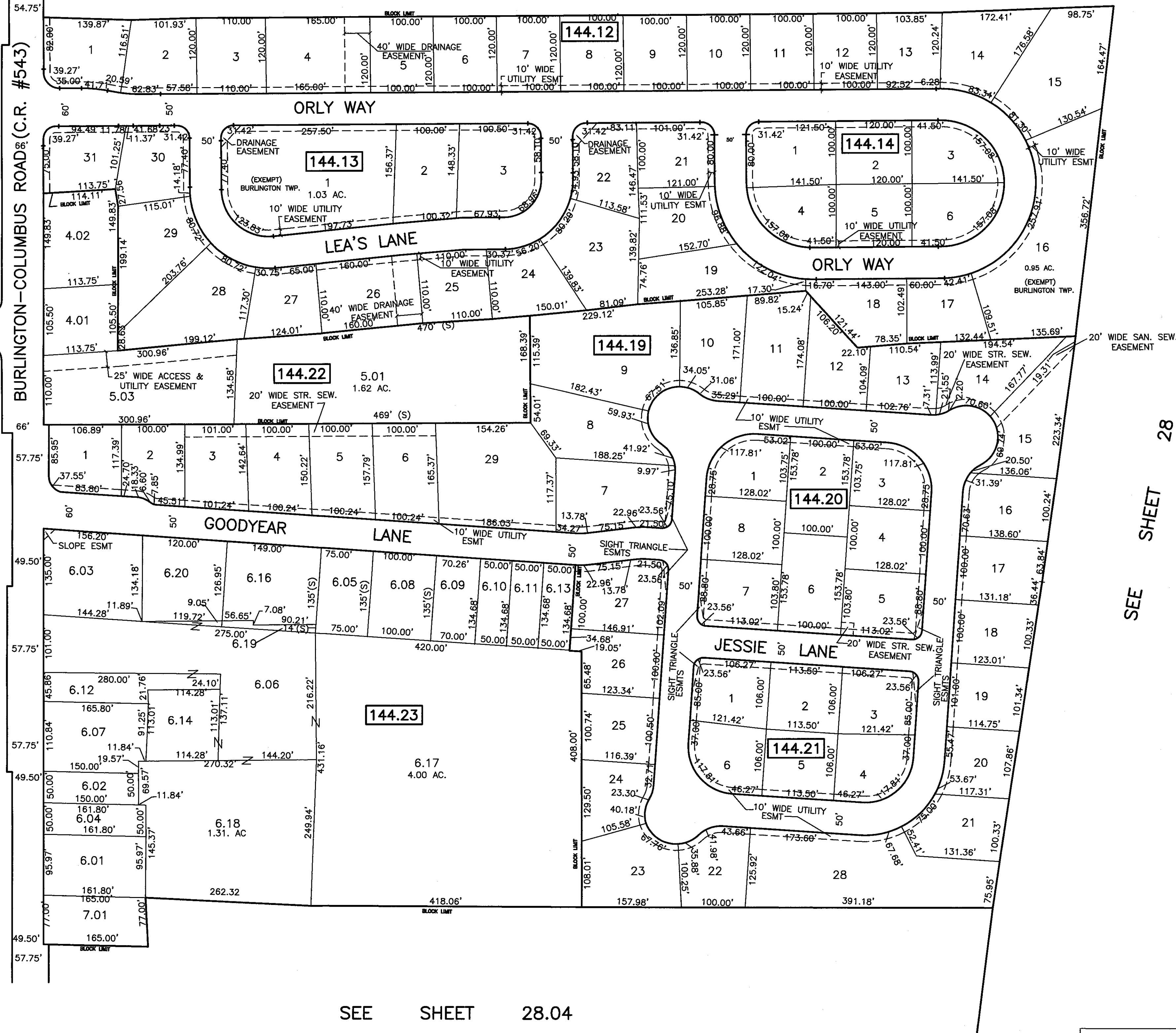
SEE SHEET 28

SEE SHEET 29.03

LASALLE DRIVE

PARLIAMENT DRIVE

BURLINGTON-COLUMBUS ROAD (C.R. #543)



SEE SHEET 28.04

SEE SHEET 28

THIS IS AN AUTOCAD COMPUTER GENERATED DRAWING.
 THIS WAS DONE UNDER THE SUPERVISION OF T. RONALD GSELL, P.E. & PLS
 LICENSED LAND SURVEYOR N.J. LICENSE #12812 DATED JAN. 11, 1999.
 THE APPROVED ORIGINAL IS ON FILE IN THE ENGINEER'S OFFICE.

THIS SHEET HAS BEEN GIVEN A FORMAL
 CERTIFICATION BY THE DIVISION OF TAXATION
 ON JULY 11, 2005, SIGNED BY JAMES COLL
 AND SANTO DIDONATO ASSIGNED
 SERIAL NUMBER 863.

**PARK NORTH
 TAX MAP**

**BURLINGTON TOWNSHIP
 BURLINGTON COUNTY, NEW JERSEY**
 SCALE: 1" = 100' JANUARY 11, 1999
T. RONALD GSELL, P.E. & P.L.S.
 200 HIGH STREET, MOUNT HOLLY, N.J.