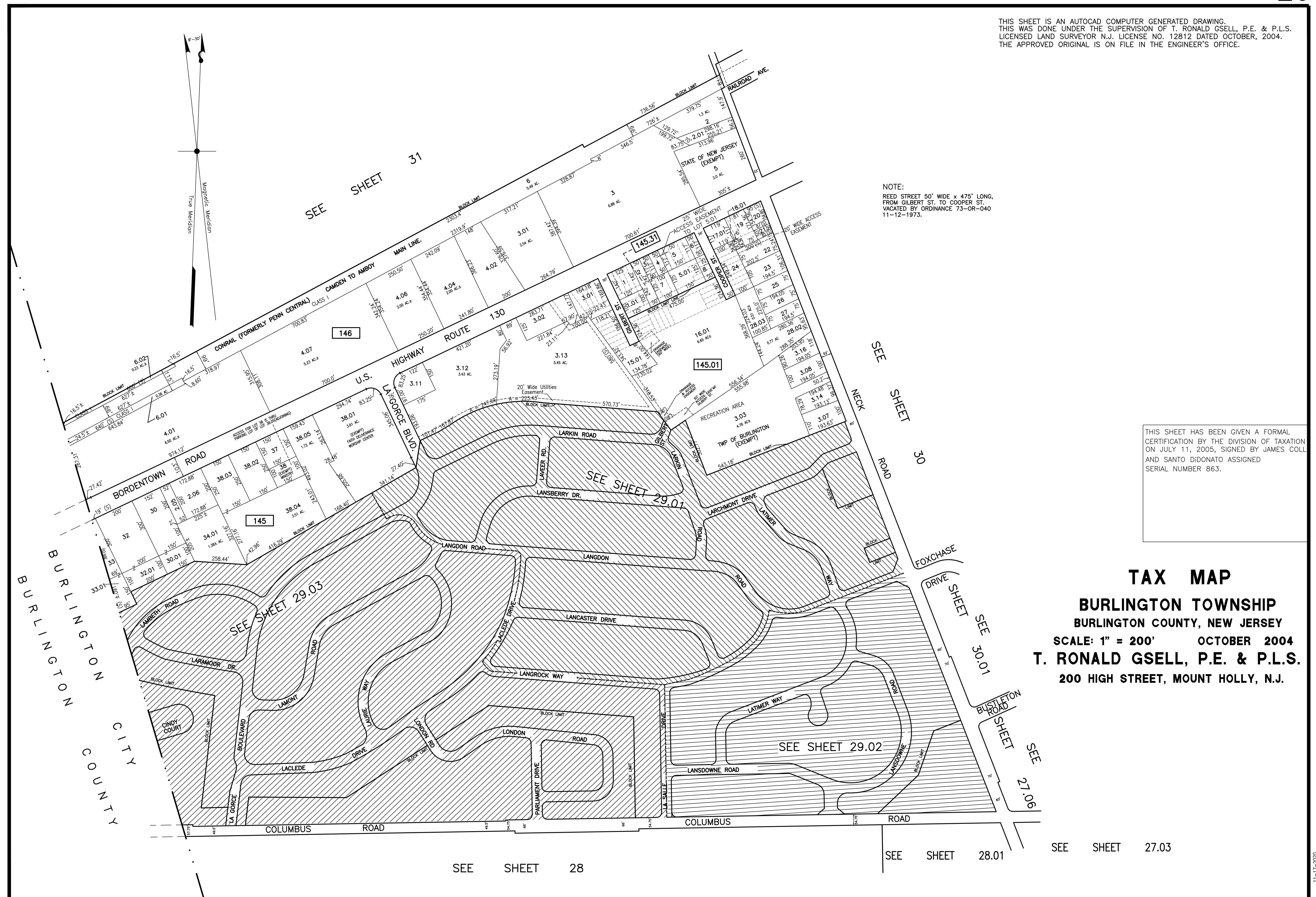
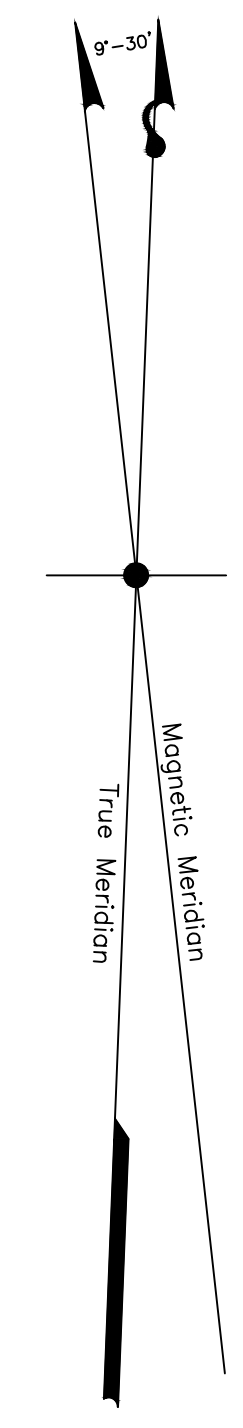


THIS SHEET IS AN AUTOCAD COMPUTER GENERATED DRAWING. THIS WAS DONE UNDER THE SUPERVISION OF T. RONALD GSELL, P.E. & P.L.S. LICENSED LAND SURVEYOR N.J. LICENSE NO. 12812 DATED OCTOBER, 2004. THE APPROVED ORIGINAL IS ON FILE IN THE ENGINEER'S OFFICE.



NOTE:  
REED STREET 50' WIDE x 475' LONG,  
FROM GILBERT ST. TO COOPER ST.,  
VACATED BY ORDINANCE 73-OR-040  
11-12-1973.

THIS SHEET HAS BEEN GIVEN A FORMAL  
CERTIFICATION BY THE DIVISION OF TAXATION  
ON JULY 11, 2005, SIGNED BY JAMES COLL  
AND SANTO DIDONATO ASSIGNED  
SERIAL NUMBER 863.

**TAX MAP**  
**BURLINGTON TOWNSHIP**  
BURLINGTON COUNTY, NEW JERSEY  
SCALE: 1" = 200'    OCTOBER 2004  
**T. RONALD GSELL, P.E. & P.L.S.**  
200 HIGH STREET, MOUNT HOLLY, N.J.