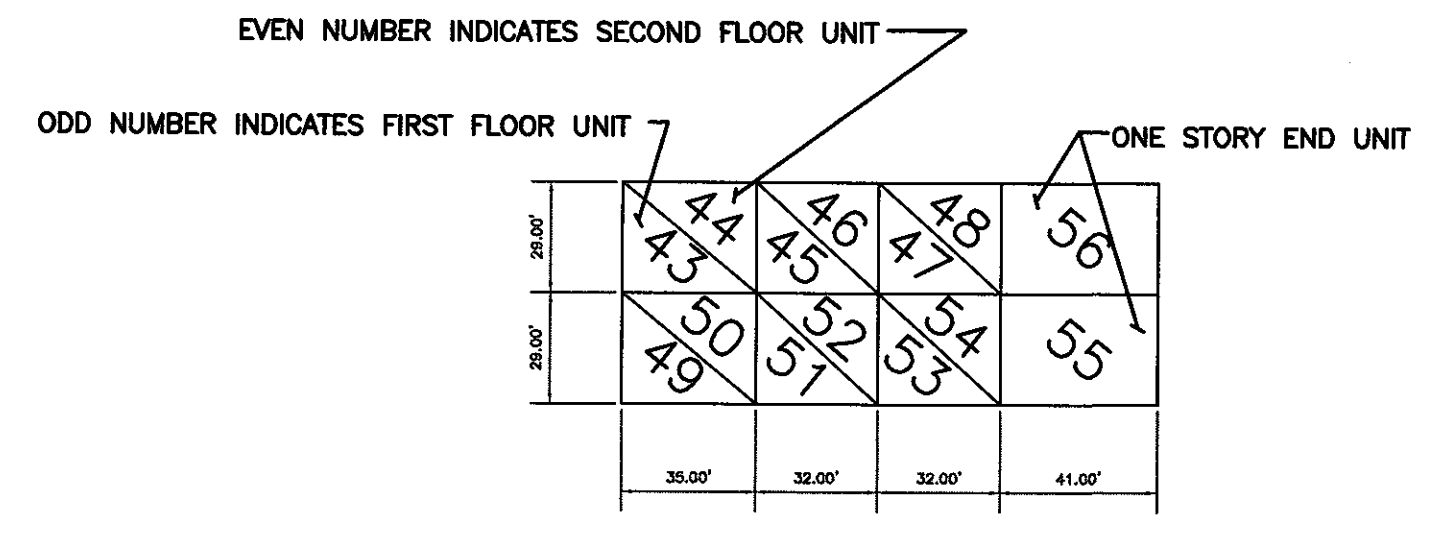
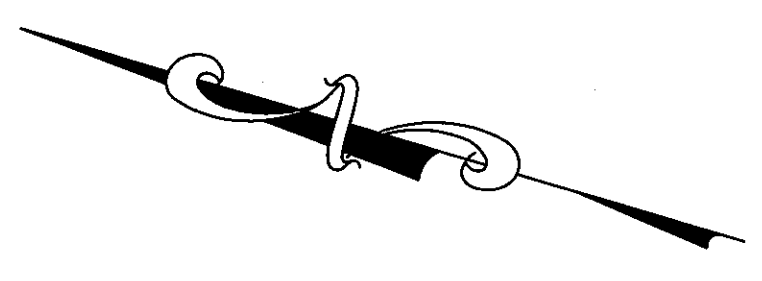


FLORENCE BURLINGTON COUNTY TOWNSHIP



CONDOMINIUM UNIT DETAIL  
SCALE: 1" = 50'

ALL LOT NUMBERS SHOWN FOR CONDO UNITS ARE PRECEDED BY A "COO" AND "COOO" QUALIFIER  
i.e. COO10/COOO1



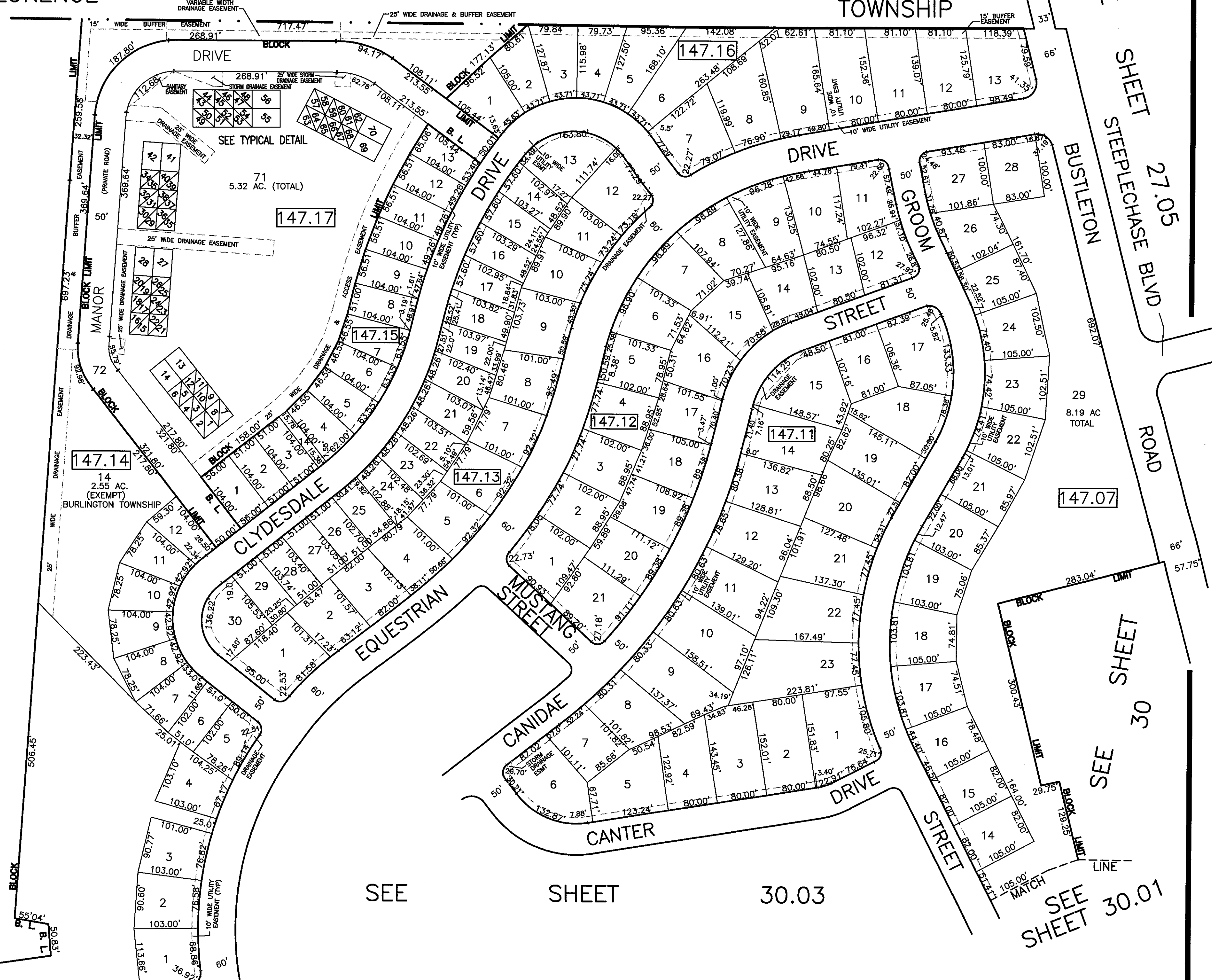
SHEET 30

SEE

30.03

SEE

THIS SHEET IS AN AUTOCAD COMPUTER GENERATED DRAWING.  
THIS WAS DONE UNDER THE SUPERVISION OF T. RONALD GSELL, P.E. & P.L.S.  
LICENSED LAND SURVEYOR N.J. LICENSE NO. 12812 DATED JULY 15, 1998.  
THE APPROVED ORIGINAL IS ON FILE IN THE ENGINEER'S OFFICE.



SEE SHEET 27.05  
STEEPLECHASE BVD

SEE SHEET 30

SEE SHEET 30.01

N. J. S. H.  
ROUTE 130

GALLOP

STEEPLECHASE  
TAX MAP

BURLINGTON TOWNSHIP  
BURLINGTON COUNTY, NEW JERSEY

SCALE: 1" = 100' JULY 15, 1998  
T. RONALD GSELL, P.E. & P.L.S.  
200 HIGH STREET, MOUNT HOLLY, N.J.

THIS SHEET HAS BEEN GIVEN A FORMAL  
CERTIFICATION BY THE DIVISION OF TAXATION  
ON JULY 11, 2005, SIGNED BY JAMES COLL  
AND SANTO DIDONATO ASSIGNED  
SERIAL NUMBER 863.