

THIS SHEET IS AN AUTOCAD GENERATED DRAWING. THIS WAS DONE UNDER THE SUPERVISION OF T. RONALD GSELL, P.E. & P.L.S., LICENSED LAND SURVEYOR N.J. LICENSE #12812, DATED [blank] THE APPROVED ORIGINAL IS ON FILE IN THE BURLINGTON TOWNSHIP'S ASSESSOR'S OFFICE.

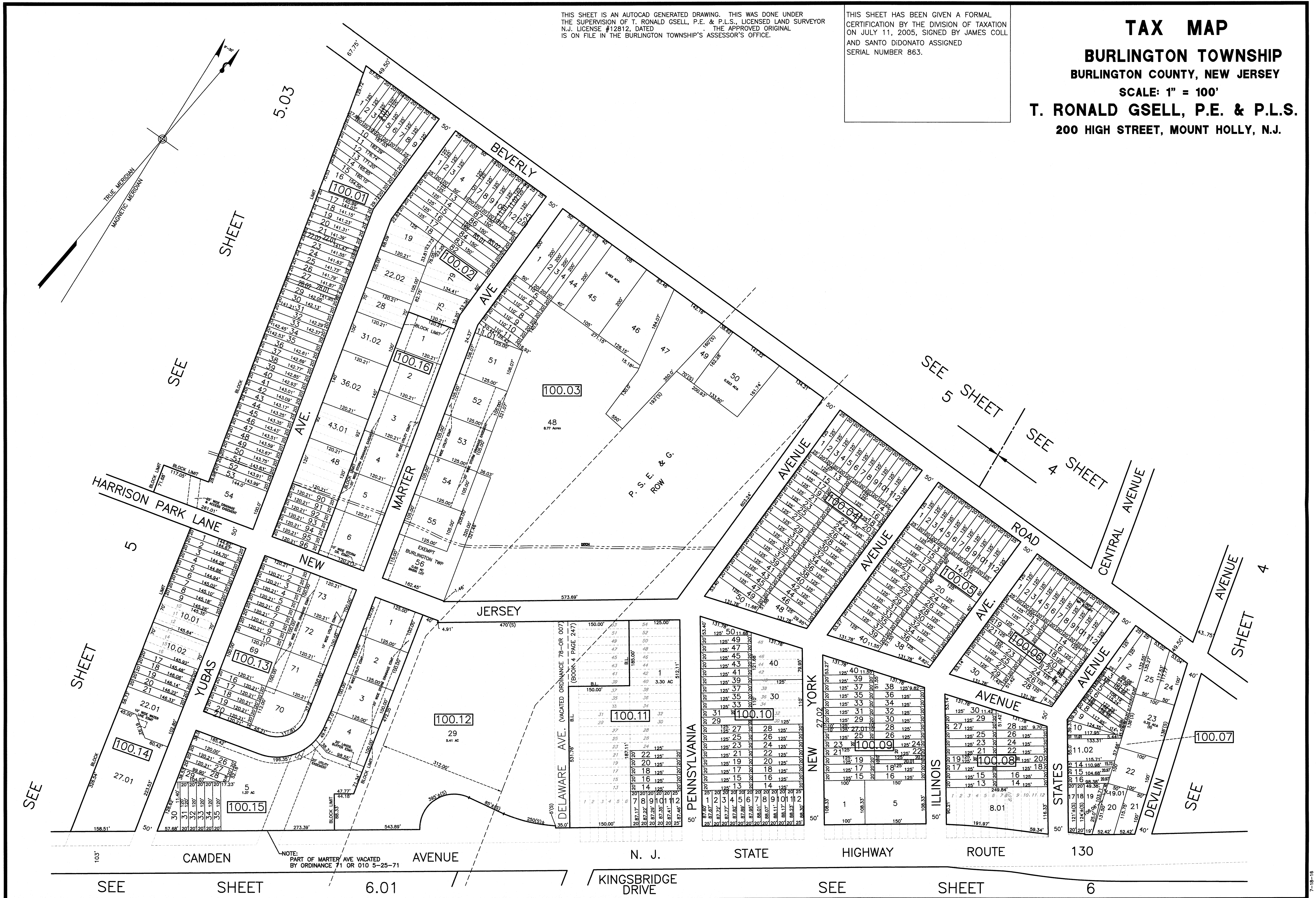
THIS SHEET HAS BEEN GIVEN A FORMAL CERTIFICATION BY THE DIVISION OF TAXATION ON JULY 11, 2005, SIGNED BY JAMES COLL AND SANTO DIDONATO ASSIGNED SERIAL NUMBER 863.

# TAX MAP

**BURLINGTON TOWNSHIP**  
BURLINGTON COUNTY, NEW JERSEY

SCALE: 1" = 100'

**T. RONALD GSELL, P.E. & P.L.S.**  
200 HIGH STREET, MOUNT HOLLY, N.J.



NOTE: PART OF MARTER AVE VACATED BY ORDINANCE 71 OR 010 5-25-71