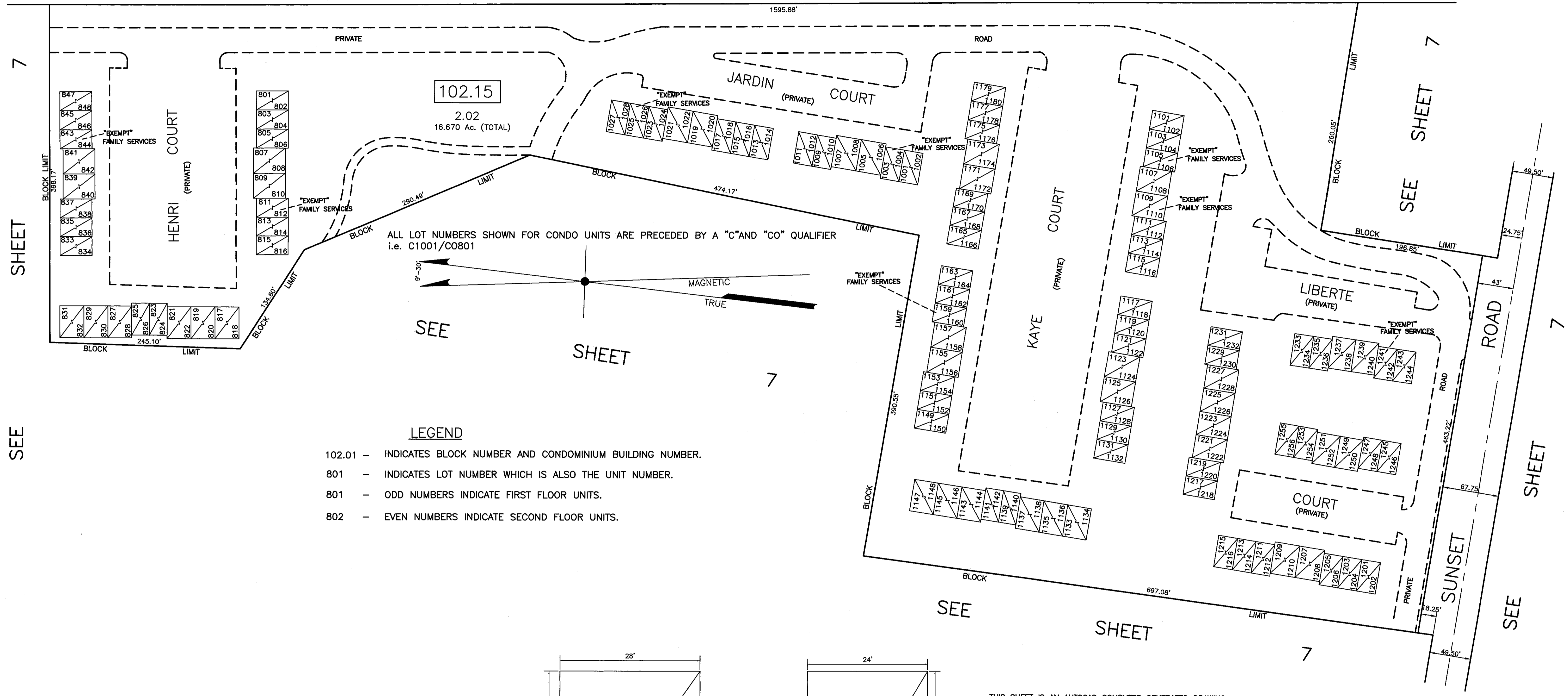


CAMPUS DRIVE 1595.88'



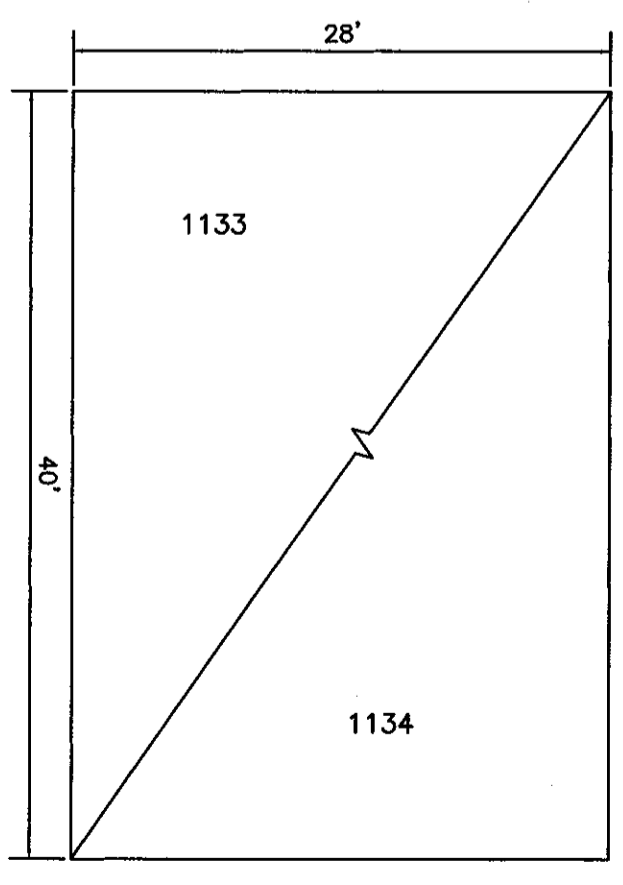
ALL LOT NUMBERS SHOWN FOR CONDO UNITS ARE PRECEDED BY A "C" AND "CO" QUALIFIER
i.e. C1001/CO801

LEGEND

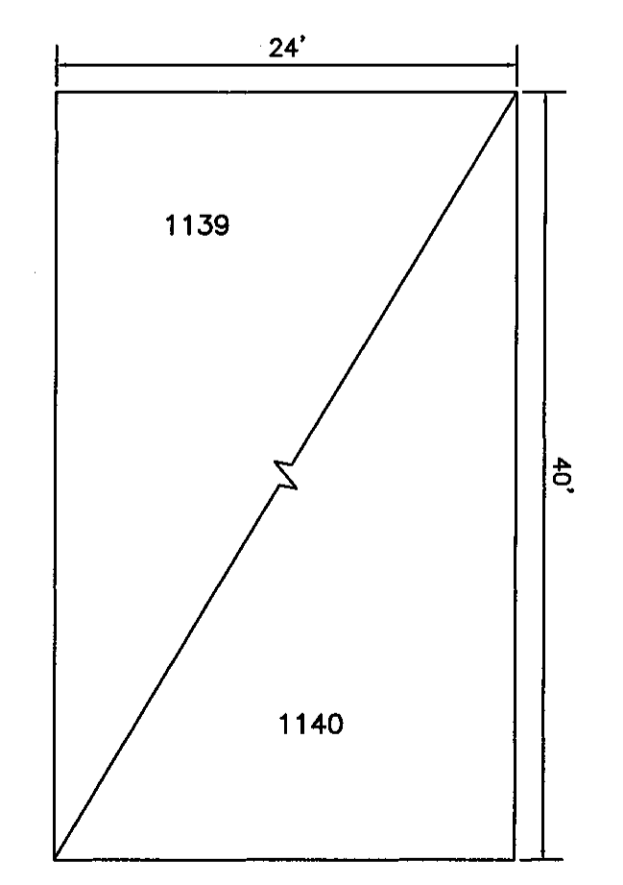
- 102.01 - INDICATES BLOCK NUMBER AND CONDOMINIUM BUILDING NUMBER.
- 801 - INDICATES LOT NUMBER WHICH IS ALSO THE UNIT NUMBER.
- 801 - ODD NUMBERS INDICATE FIRST FLOOR UNITS.
- 802 - EVEN NUMBERS INDICATE SECOND FLOOR UNITS.

NOTE:

THE TOTAL CONDOMINIUM LAND AREA IS 16.670 ACRES, AND FOR TAX PURPOSES IS DIVIDED BETWEEN THE 212 UNIT OWNERS FOR WHICH EACH IS PROPORTIONATELY ASSESSED.



TYPICAL CONDOMINIUM
SCALE: 1" = 10'



TYPICAL CONDOMINIUM
SCALE: 1" = 10'

CHATEAU CONDOMINIUM
TOTAL 212 UNITS

THIS SHEET IS AN AUTOCAD COMPUTER GENERATED DRAWING.
THIS WAS DONE UNDER THE SUPERVISION OF T. RONALD GSELL, P.E. & P.L.S.
LICENSED LAND SURVEYOR N.J. LICENSE NO. 12812 DATED .
THE APPROVED ORIGINAL IS ON FILE IN THE ENGINEER'S OFFICE.

THIS SHEET HAS BEEN GIVEN A FORMAL
CERTIFICATION BY THE DIVISION OF TAXATION
ON JULY 11, 2005, SIGNED BY JAMES COLL
AND SANTO DIDONATO ASSIGNED
SERIAL NUMBER 863.

TAX MAP
BURLINGTON TOWNSHIP
BURLINGTON COUNTY, NEW JERSEY
SCALE: 1" = 60'
T. RONALD GSELL, P.E. & P.L.S.
200 HIGH STREET, MOUNT HOLLY, N.J.

SEE SHEET 7

SEE SHEET 7

SEE SHEET 7