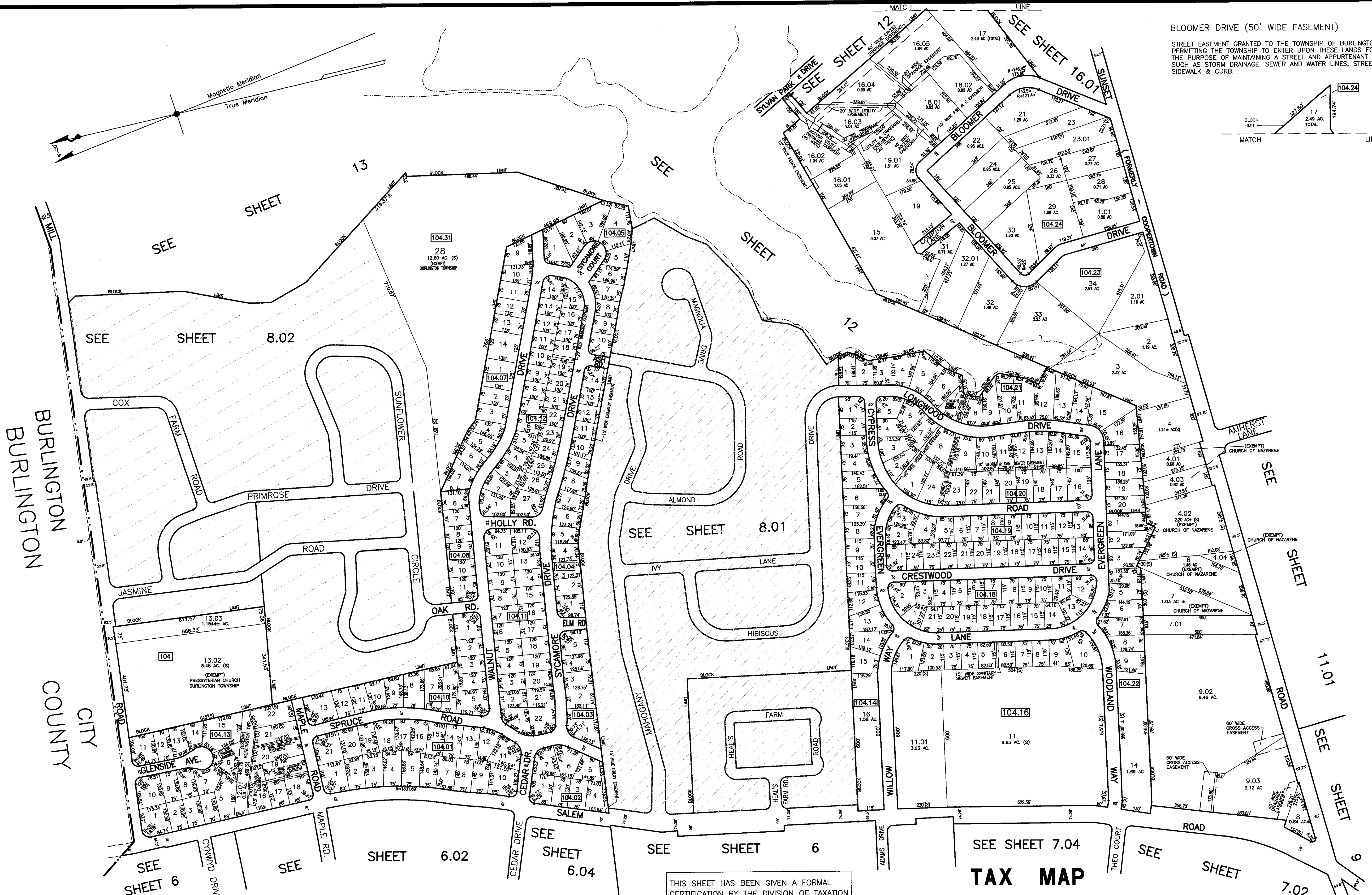
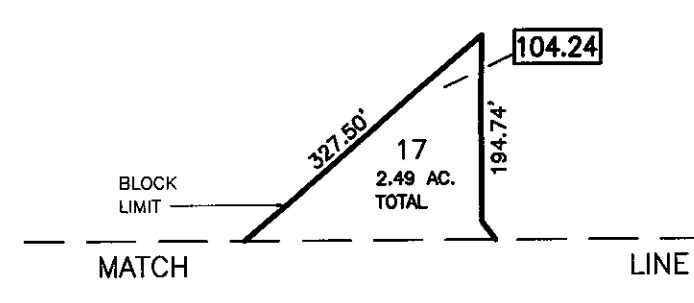




BLOOMER DRIVE (50' WIDE EASEMENT)
 STREET EASEMENT GRANTED TO THE TOWNSHIP OF BURLINGTON PERMITTING THE TOWNSHIP TO ENTER UPON THESE LANDS FOR THE PURPOSE OF MAINTAINING A STREET AND APPURTENANT USES SUCH AS STORM DRAINAGE, SEWER AND WATER LINES, STREET LIGHTS SIDEWALK & CURB.



BURLINGTON COUNTY
 BURLINGTON CITY

SEE SHEET 6

SEE SHEET 6

SHEET 6.02

SEE SHEET 6.04

SEE SHEET 6

SEE SHEET 7.04

SEE SHEET 7.02

THIS SHEET HAS BEEN GIVEN A FORMAL CERTIFICATION BY THE DIVISION OF TAXATION ON JULY 11, 2005, SIGNED BY JAMES COLL AND SANTO DIDONATO ASSIGNED SERIAL NUMBER 863.

TAX MAP
BURLINGTON TOWNSHIP
BURLINGTON COUNTY, NEW JERSEY
 SCALE: 1" = 200' OCTOBER 2004
T. RONALD GSELL, P.E. & P.L.S.
 200 HIGH STREET, MOUNT HOLLY, N.J.

THIS SHEET IS AN AUTOCAD COMPUTER GENERATED DRAWING. THIS WAS DONE UNDER THE SUPERVISION OF T. RONALD GSELL, P.E. & P.L.S. LICENSED LAND SURVEYOR N.J. LICENSE NO. 12812 DATED THE APPROVED ORIGINAL IS ON FILE IN THE ENGINEER'S OFFICE.