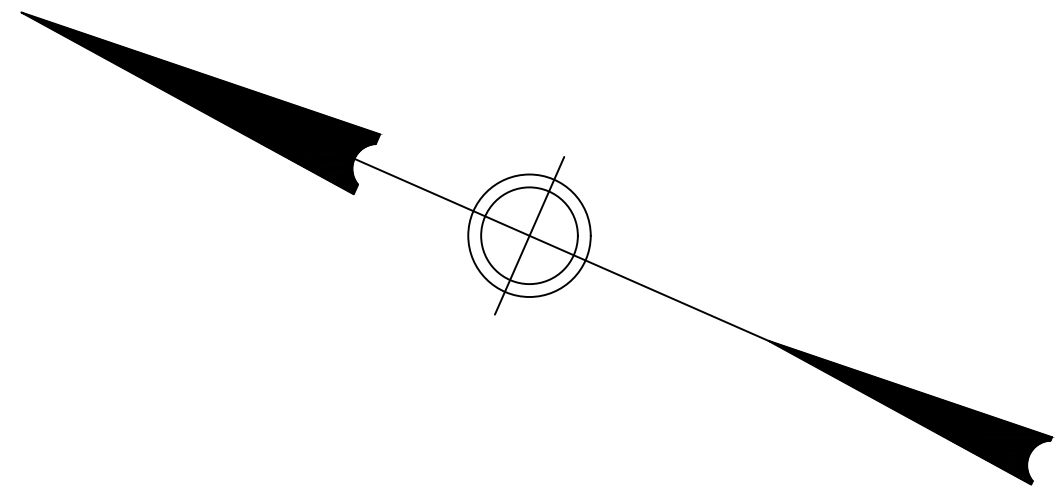


SEE SHEET 11.03



SEE SHEET 11.01

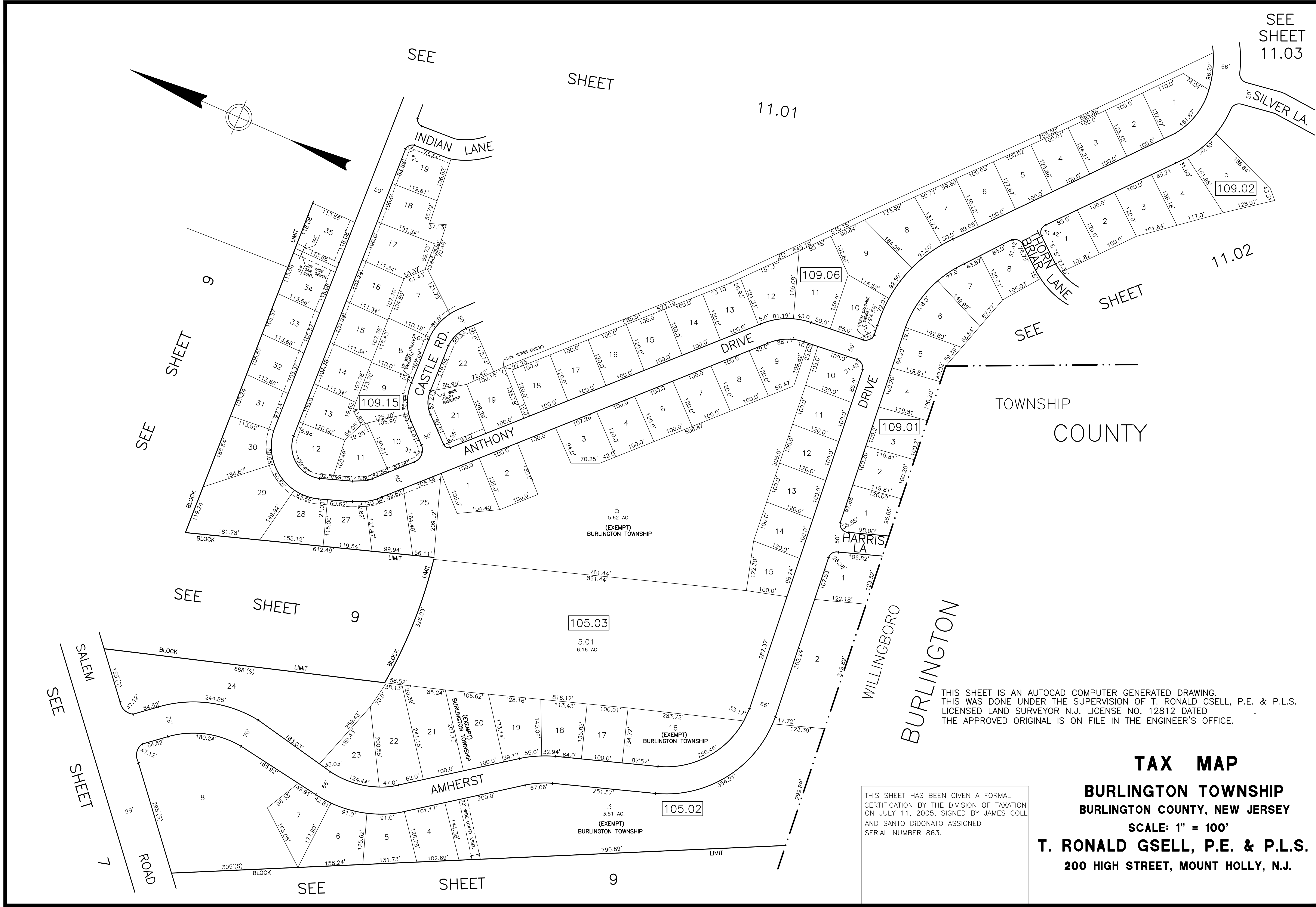
SEE SHEET 9

SEE SHEET 9

SEE SHEET 7

SEE SHEET 7

SEE SHEET 9



TOWNSHIP COUNTY

THIS SHEET IS AN AUTOCAD COMPUTER GENERATED DRAWING. THIS WAS DONE UNDER THE SUPERVISION OF T. RONALD GSELL, P.E. & P.L.S. LICENSED LAND SURVEYOR N.J. LICENSE NO. 12812 DATED THE APPROVED ORIGINAL IS ON FILE IN THE ENGINEER'S OFFICE.

THIS SHEET HAS BEEN GIVEN A FORMAL CERTIFICATION BY THE DIVISION OF TAXATION ON JULY 11, 2005, SIGNED BY JAMES COLL AND SANTO DIDONATO ASSIGNED SERIAL NUMBER 863.

**TAX MAP**  
**BURLINGTON TOWNSHIP**  
**BURLINGTON COUNTY, NEW JERSEY**  
SCALE: 1" = 100'  
**T. RONALD GSELL, P.E. & P.L.S.**  
200 HIGH STREET, MOUNT HOLLY, N.J.