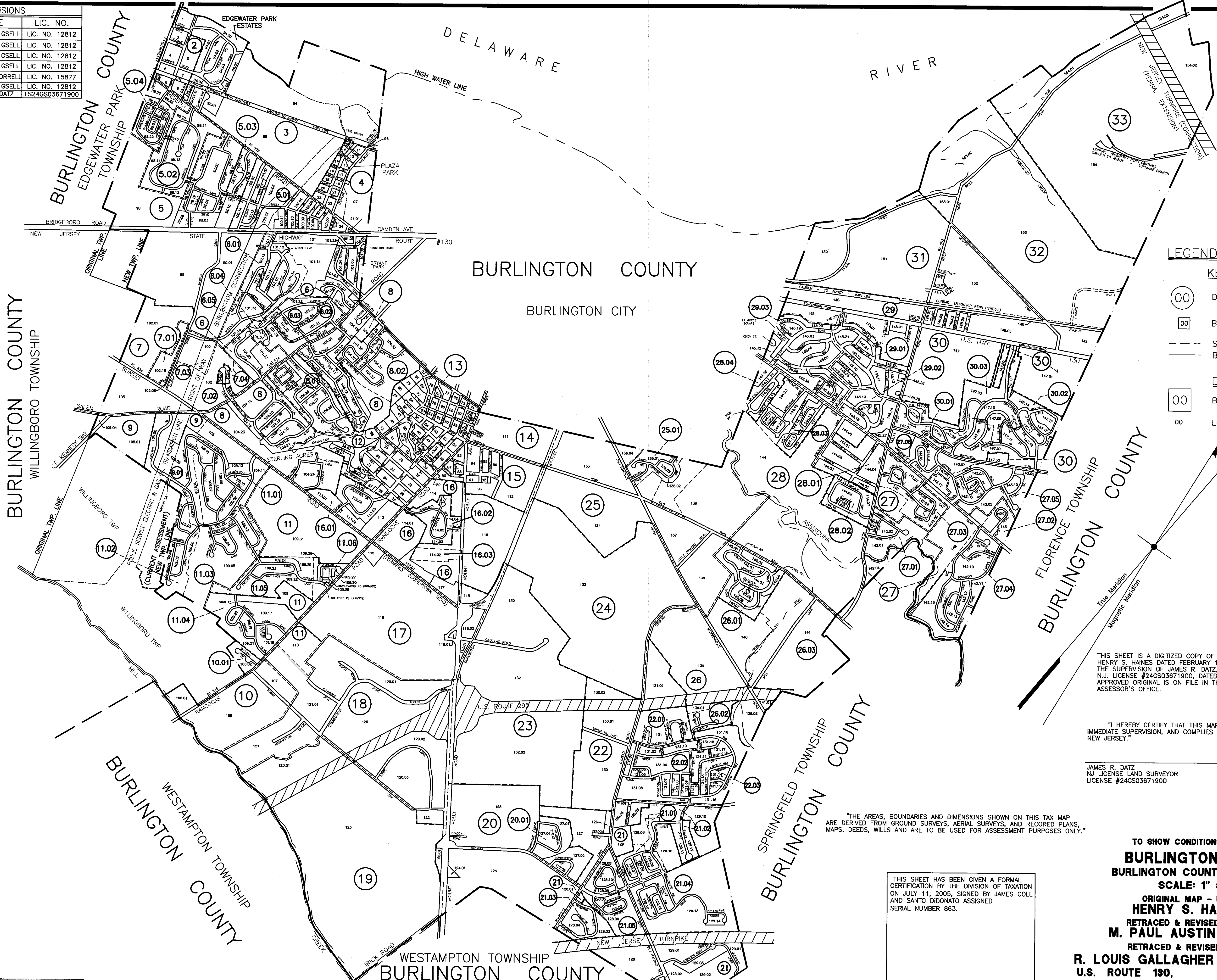


REVISIONS		
DATE	NAME	LIC. NO.
2-31-99	T. RONALD GSELL	LIC. NO. 12812
01-04-00	T. RONALD GSELL	LIC. NO. 12812
01-11-01	T. RONALD GSELL	LIC. NO. 12812
8-27-03	T. RONALD GSELL	LIC. NO. 12812
4-19-05	RAYMOND WORRELL	LIC. NO. 15877
8-7-07	T. RONALD GSELL	LIC. NO. 12812
1-05-16	JAMES R. DATZ	LS24GS03671900



LEGEND

KEY SHEET

- 00 DETAIL SHEET NUMBER
- 00 BLOCK NUMBER
- SHEET LIMIT
- BLOCK LIMIT

DETAIL SHEETS

- 00 BLOCK NUMBERS
- 00 LOT NUMBER

THIS SHEET IS A DIGITIZED COPY OF THE TAX MAP PREPARED BY HENRY S. HAINES DATED FEBRUARY 1917 AND WAS DONE UNDER THE SUPERVISION OF JAMES R. DATZ, LICENSED LAND SURVEYOR, N.J. LICENSE #24GS03671900, DATED FEBRUARY 12, 2014. THE APPROVED ORIGINAL IS ON FILE IN THE BURLINGTON TOWNSHIP'S ASSESSOR'S OFFICE.

"I HEREBY CERTIFY THAT THIS MAP HAS BEEN REVISED UNDER MY IMMEDIATE SUPERVISION, AND COMPLIES WITH THE LAWS OF THE STATE OF NEW JERSEY."

JAMES R. DATZ
NJ LICENSE LAND SURVEYOR
LICENSE #24GS03671900

DATE

"THE AREAS, BOUNDARIES AND DIMENSIONS SHOWN ON THIS TAX MAP ARE DERIVED FROM GROUND SURVEYS, AERIAL SURVEYS, AND RECORDED PLANS, MAPS, DEEDS, WILLS AND ARE TO BE USED FOR ASSESSMENT PURPOSES ONLY."

THIS SHEET HAS BEEN GIVEN A FORMAL CERTIFICATION BY THE DIVISION OF TAXATION ON JULY 11, 2005, SIGNED BY JAMES COLL AND SANTO DIDONATO ASSIGNED SERIAL NUMBER 863.

TO SHOW CONDITIONS AS OF 1-05-16

BURLINGTON TOWNSHIP
BURLINGTON COUNTY, NEW JERSEY
SCALE: 1" = 1200'

ORIGINAL MAP - FEB. 1917 BY
HENRY S. HAINES, C.E.

RETRACED & REVISED SEPT. 1943 BY
M. PAUL AUSTIN ASSOCIATES

RETRACED & REVISED BY JULY 1972
R. LOUIS GALLAGHER ENGINEERING INC.
U.S. ROUTE 130, FLORENCE, N.J.